

WAC LIGHTING

2.5" Low Voltage

New Construction Non-IC Housing

Model & Product

HR-802 2.5in Low Voltage New
Construction Non-IC Housing

Example: **HR-802**

DESCRIPTION

Superb performance delivered in a small package. The 2.5" Low Voltage Recessed Downlight series offers smooth and crisp light for under cabinet and tight recessed spaces where miniature apertures are desired. May be used with any WAC compatible 2.5" HR-837, HR-834, or HR-836 trims.

FEATURES

- 3" clearance on all sides when insulation is present
- Total depth of 4", one of the lowest profile recessed units available
- Low profile housing
- Transformer included
- 5 year warranty

SPECIFICATIONS

Construction:	20 gauge steel
Power:	50W
Input:	120 VAC, 50/60Hz
Dimming:	ELV: 100-10%
Light Source:	Halogen MR16
Mounting:	Supplied with hanger bars, adjustable from 15"-242" to accommodate various joist construction and grid sizes.
Cut Out:	3"
Ceiling Thickness:	3/4"
Operating Temp:	-4°F to 104°F (-20°C to 40°C)
Standards:	UL, cUL, Damp Location Listed, Non IC

Fixture Type: _____

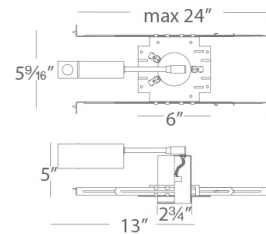
Catalog Number: _____

Project: _____

Location: _____



LINE DRAWING:



WAC LIGHTING

2.5" Low Voltage

Step Baffle Trim

Model & Light Source	Lumens	Finish
HR-834 LED MR16 (Order separately)		WT White
HR-834LED LED MR16 (Included)		WT/WT White/White

Fixture Type: _____

Catalog Number: _____

Project: _____

Location: _____

Example: **HR-834-WT**

DESCRIPTION

Superb performance delivered in a small package. The 2.5" Low Voltage Recessed Downlight series offers smooth and crisp light for under cabinet and tight recessed spaces where miniature apertures are desired. For use with HR-800 series low voltage housings. Accepts MR16 LED, housing and lamp are sold separately.

FEATURES

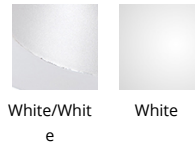
- Accommodates most LED MR16 lamps
- Retention clips secure lens firmly to lamp
- Clear lens included, replaceable lens options available
- 5 year warranty

SPECIFICATIONS

Construction:	20 gauge steel
Light Source:	LED MR16 (Order separately), LED MR16 (Included)
Finish:	Electrostatically Powder Coated: White, White/White, Electrostatically Powder Coated: White/White
Operating Temp:	-4°F to 104°F (-20°C to 40°C)
Standards:	UL, cUL, Damp Location Listed



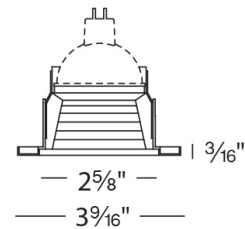
FINISHES:



White/White

White

LINE DRAWING:



WAC LIGHTING

2.5" Low Voltage

Downlight Trim

Model & Light Source	Lumens	Finish
HR-836 LED MR16 (Order separately)		BN Brushed Nickel
HR-836LED LED MR16 (Included)		CB Copper Bronze
		WT White

Fixture Type: _____

Catalog Number: _____

Project: _____

Location: _____

Example: **HR-836-BN**

DESCRIPTION

Superb performance delivered in a small package. The 2.5" Low Voltage Recessed Downlight series offers smooth and crisp light for under cabinet and tight recessed spaces whereminiature apertures are desired. For use with HR-800 series low voltage housings. Accepts MR16 LED, housing and lamp are sold separately.

FEATURES

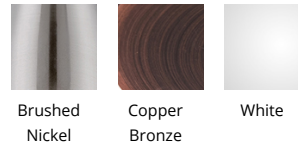
- Accommodates most LED MR16 lamps
- Retention clips secure lens firmly to lamp
- Clear lens included, replaceable lens options available
- 5 year warranty

SPECIFICATIONS

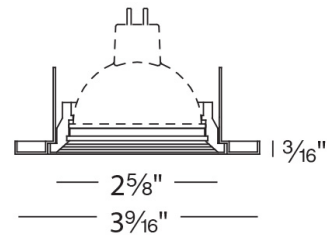
Construction:	20 gauge steel with die-cast aluminum baffle
Light Source:	LED MR16 (Order separately), LED MR16 (Included)
Finish:	Electrostatically Powder Coated:White, Electrostatically Powder Coated::Copper Bronze, Electrostatically Powder Coated::Brushed Nickel
Operating Temp:	-4°F to 104°F (-20°C to 40°C)
Standards:	UL, cUL, Damp Location Listed



FINISHES:



LINE DRAWING:



WAC LIGHTING

2.5" Low Voltage

Adjustable Trim

Model & Light Source	Lumens	Finish
HR-837 LED MR16 (Order separately) HR-837LED LED MR16 (Included)		BK Black BN Brushed Nickel CB Copper Bronze WT White

Example: **HR-837-BK**

DESCRIPTION

Superb performance delivered in a small package. The 2.5" Low Voltage Recessed Downlight series offers smooth and crisp light for under cabinet and tight recessed spaces whereminiature apertures are desired. For use with HR-800 series low voltage housings. Accepts MR16 LED, housing and lamp are sold separately.

FEATURES

- Accommodates most LED MR16 lamps
- Retention clips secure lens firmly to lamp
- Clear lens included, replaceable lens options available
- 5 year warranty

SPECIFICATIONS

Construction:	20 gauge steel
Light Source:	LED MR16 (Order separately), LED MR16 (Included)
Finish:	Electrostatically Powder Coated:White, Electrostatically Powder Coated::Copper Bronze, Electrostatically Powder Coated:::Brushed Nickel, Electrostatically Powder Coated::::Black
Operating Temp:	-4°F to 104°F (-20°C to 40°C)
Standards:	UL, cUL, Damp Location Listed

Fixture Type: _____

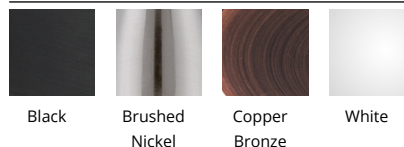
Catalog Number: _____

Project: _____

Location: _____



FINISHES:



LINE DRAWING:

