

WAC LIGHTING

Tulum

Quick Connect™ Pendant 3000K

Model & Wattage	Lumens	Color Temp & CRI	Finish
QP-914LED QP914	235		FR/BN Frosted/Brushed Nickel FR/CH Frosted/Chrome

Example: **QP-914LED-FR/BN**

DESCRIPTION

A frosted glass pendant carefully etched and paneled to reveal the mini pendant's inner light, Tulum offers a visually soft option for a contemporary space using a modern design that is perfect above a counter, bar or table.

FEATURES

- All socket sets include 6ft wire that may be cut in the field
- Lamp included
- Free of projected heat, ultraviolet and infrared radiation
- 5 year warranty

SPECIFICATIONS

Construction:	Mouth blown glass shade with electroplated metal hardware, Mouth blown glass shade with plated metal hardware
Input:	12 VAC, 50/60Hz
Dimming:	ELV: 100-15%
Light Source:	LED Bi-Pin 2.7W, 110lm, 3000K, 85CRI, Xenon Bi-Pin Max 50W
Rated Life:	50000 Hours,
Finish:	Frosted/Chrome, Frosted/Brushed Nickel
Operating Temp:	-4°F to 104°F (-20°C to 40°C),
Standards:	UL, cUL, Dry Location Listed

Fixture Type: _____

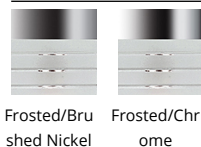
Catalog Number: _____

Project: _____

Location: _____



FINISHES:



WAC LIGHTING

120V Track

Quick Connect™ Adapter

Model & Track System	Finish
EN-HQ50AR H Track	BK Black BN Brushed Nickel DB Dark Bronze

Example: **EN-HQ50AR-BK**

DESCRIPTION

120V Track systems are modular and can be designed for multiple applications in nearly any interior environment. Quick Connect™ transformers are used to install low voltage pendants and track fixtures to a track system. Compatible with any WAC Lighting QP or QF track fixture or pendant.

FEATURES

- The threaded male adapter used on Quick Connect™ fixtures makes inter-system compatibility a snap.
- Simply insert the metal fitting into the appropriate system adapter, hand tighten the threaded collar and you are done!
- Order one per Quick Connect™ fixture or pendant used
- Maximum weight of 5 lbs. supported
- 1W minimum load required
- Smooth and continuous ELV dimming
- Allows all Quick Connect™ elements to be used with the H, L, J, J2 track systems.
- Built-in auto reset, soft start, short and overload circuit
- 5 year warranty

SPECIFICATIONS

Construction:	Polycarbonate
Input:	120 VAC, 50/60Hz
Dimming:	ELV: %
Finish:	Dark Bronze, Black, Brushed Nickel
Operating Temp:	-4°F to 104°F (-20°C to 40°C)
Standards:	UL, cUL, Dry Location Listed

Fixture Type: _____

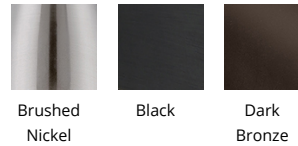
Catalog Number: _____

Project: _____

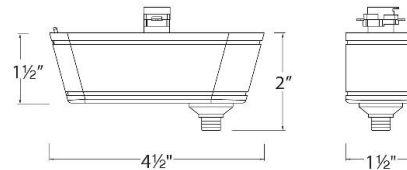
Location: _____



FINISHES:



LINE DRAWING:



WAC LIGHTING

W Track

Quick Connect™ Adapter

Model	Finish
EN-WQ50AR	BK Black

Example: **EN-WQ50AR-BK**

DESCRIPTION

The threaded male adapter used on Quick Connect™ fixtures makes inter-system compatibility a snap. Simply insert the metal fitting into the appropriate system adapter, hand tighten the threaded collar and you are done!

FEATURES

- The Quick Connect™ collection includes a wide array of pendants and fixtures with different mounting options.
- The threaded male adapter makes inter-system compatibility a snap.
- Simply insert the metal fitting into the system adapter and hand tighten the collar.
- Order one per Quick Connect™ fixture or pendant used.
- Recessed transformer within W track
- Allows all Quick Connect™ elements to be used with the W track 120V systems
- 1W minimum load transformer
- Smooth and continuous ELV dimming
- 5 year warranty

SPECIFICATIONS

Input:	120 VAC, 50/60Hz
Dimming:	ELV: %
Finish:	Black
Operating Temp:	-4°F to 104°F (-20°C to 40°C)
Standards:	UL, cUL, Dry Location Listed

Fixture Type: _____

Catalog Number: _____

Project: _____

Location: _____

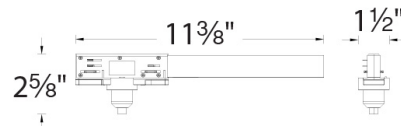


FINISHES:



Black

LINE DRAWING:



WAC LIGHTING

Flexrail1™

Quick Connect™ Adapter

System Type	Model	Finish
HM1	EN50	PT Platinum

Example: **HM1-EN50-PT**

DESCRIPTION

Flexrail1™ system transformer adapts all Quick Connect™ elements (track heads or pendants) for use with the HM1 rail system. The adapter contains a threaded nipple for Quick Connect™ socket sets and also houses a 50 watt electronic transformer. One adapter must be ordered for each quick connect element used on a system.

FEATURES

- The Flexrail1™ Quick Connect™ transformer adapter allows any QP pendant or QF fixture to be used with the Flexrail1™ system
- Order one per Quick Connect™ fixture or pendant used
- Contains a threaded nipple for Quick Connect™ socket sets and also houses a 50W transformer
- 1W minimum load required
- Transformer concealed within the fixture
- 5 year warranty

SPECIFICATIONS

Input:	120 VAC, 50/60Hz
Dimming:	ELV: 100-10%
Finish:	Platinum
Operating Temp:	-4°F to 104°F (-20°C to 40°C)
Standards:	UL, cUL, Dry Location Listed

Fixture Type: _____

Catalog Number: _____

Project: _____

Location: _____



FINISHES:



Platinum

WAC LIGHTING

Quick Connect™

4.5" Shallow Pendant Canopy, Remote Transformer Required

Model & Size	Finish
QMP-1RN-TR QMP-1SQ-TR	BN Brushed Nickel CH Chrome

Example: **QMP-1RN-TR-BN**

FEATURES

- For use with any of our Quick Connect™ pendants
- Mounts over a standard 4" junction box
- Order Class 2 remote transformer separately
- 5 year warranty

SPECIFICATIONS

Construction:	Plated aluminum
Input:	12 VAC
Finish:	Electroplated: Chrome, Brushed Nickel
Standards:	UL, cUL, Dry Location Listed

Fixture Type: _____

Catalog Number: _____

Project: _____

Location: _____



FINISHES:



Brushed
Nickel

Chrome

WAC LIGHTING

Quick Connect™

4.5" Pendant Canopy, Transformer Included

Model & Size	Finish
QMP-60ERN	BN Brushed Nickel CH Chrome

Example: **QMP-60ERN-BN**

FEATURES

- For use with any of our Quick Connect™ pendants
- 60W integral electronic transformer included
- Smooth and continuous ELV dimming
- Mounts over a standard 4" junction box
- Includes optional decorative collar for shallow junction box
- 5 year warranty

SPECIFICATIONS

Construction:	Plated aluminum
Power:	Max 60W
Input:	120 VAC, 50/60Hz
Finish:	Electroplated: Chrome, Brushed Nickel
Standards:	UL, cUL, Dry Location Listed

Fixture Type: _____

Catalog Number: _____

Project: _____

Location: _____



FINISHES:



Brushed
Nickel

Chrome

WAC LIGHTING

Quick Connect™

12 Points Round Mirrored Canopy

Model & Product

QMP-G12RN-MR 12-Point round mirrored canopy

Example: **QMP-G12RN-MR**

FEATURES

- For use with any of our Quick Connect™ pendants
- 60W integral electronic transformer for each drop
- Smooth and continuous ELV dimming
- Includes accent caps in Brushed Nickel and Chrome to match any of our socket sets
- 5 year warranty

SPECIFICATIONS

Construction:	Mirrored Canopy with plated hardware
Power:	Max 12 X 60W
Input:	120 VAC, 50/60Hz
Standards:	UL, cUL, Dry Location Listed



Fixture Type: _____

Catalog Number: _____

Project: _____

Location: _____

WAC LIGHTING

Quick Connect™

1 Point Round Mirrored Canopy

Model & Product

QMP-G1RN-MR 1-Point round mirrored canopy

Example: **QMP-G1RN-MR**

FEATURES

- For use with any of our Quick Connect™ pendants
- 60W integral electronic transformer included
- Smooth and continuous ELV dimming
- Includes accent caps in Brushed Nickel and Chrome to match any of our socket sets
- 5 year warranty

SPECIFICATIONS

Construction:	Mirrored Canopy with plated hardware
Power:	Max 60W
Input:	120 VAC, 50/60Hz
Standards:	UL, cUL, Dry Location Listed



Fixture Type: _____

Catalog Number: _____

Project: _____

Location: _____

WAC LIGHTING

Quick Connect™

3 Points Rectangular Mirrored Canopy

Model & Product

QMP-G3RE-MR 3-Point rectangular mirrored canopy

Example: **QMP-G3RE-MR**

FEATURES

- For use with any of our Quick Connect™ pendants
- 60W integral electronic transformer for each drop
- Smooth and continuous ELV dimming
- Includes accent caps in Brushed Nickel and Chrome to match any of our socket sets
- 5 year warranty

SPECIFICATIONS

Construction:	Mirrored Canopy with plated hardware
Power:	Max 3 X 60W
Input:	120 VAC, 50/60Hz
Standards:	UL, cUL, Dry Location Listed



Fixture Type: _____

Catalog Number: _____

Project: _____

Location: _____

WAC LIGHTING

Quick Connect™

3 Points Round Mirrored Canopy

Model & Product

QMP-G3RN-MR 3-Point round mirrored canopy

Example: **QMP-G3RN-MR**

FEATURES

- For use with any of our Quick Connect™ pendants
- 60W integral electronic transformer for each drop
- Smooth and continuous ELV dimming
- Includes accent caps in Brushed Nickel and Chrome to match any of our socket sets
- 5 year warranty

SPECIFICATIONS

Construction:	Mirrored Canopy with plated hardware
Power:	Max 3 X 60W
Input:	120 VAC, 50/60Hz
Standards:	UL, cUL, Dry Location Listed



Fixture Type: _____

Catalog Number: _____

Project: _____

Location: _____

WAC LIGHTING

Quick Connect™

6 Points Round Mirrored Canopy

Model & Product

QMP-G6RN-MR 6-Point round mirrored canopy

Example: **QMP-G6RN-MR**

FEATURES

- For use with any of our Quick Connect™ pendants
- 60W integral electronic transformer for each drop
- Smooth and continuous ELV dimming
- Includes accent caps in Brushed Nickel and Chrome to match any of our socket sets
- 5 year warranty

SPECIFICATIONS

Construction:	Mirrored Canopy with plated hardware
Power:	Max 6 X 60W
Input:	120 VAC, 50/60Hz
Standards:	UL, cUL, Dry Location Listed



Fixture Type: _____

Catalog Number: _____

Project: _____

Location: _____

WAC LIGHTING

Quick Connect™

3.25" Shallow Pendant Canopy, Remote Transformer Required

Model	Finish
QMP-MI-TR	BN Brushed Nickel CH Chrome

Example: **QMP-MI-TR-BN**

FEATURES

- For use with any of our Quick Connect™ pendants
- Includes recess wiring compartment with one knock out that accepts trade size connector
- Order Class 2 remote transformer separately
- 5 year warranty

SPECIFICATIONS

Construction:	Plated aluminum
Input:	12 VAC
Finish:	Electroplated: Chrome, Brushed Nickel
Standards:	UL, cUL, Dry Location Listed

Fixture Type: _____

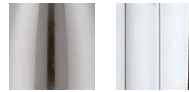
Catalog Number: _____

Project: _____

Location: _____



FINISHES:



Brushed
Nickel

Chrome

WAC LIGHTING

Quick Connect™

4.5" Sloped Ceiling Pendant Canopy, Transformer
Included

Model & Wattage	Lumens	Color Temp & CRI	Finish
QMP-S60ERN Max 60W			BN Brushed Nickel CH Chrome

Example: **QMP-S60ERN-BN**

FEATURES

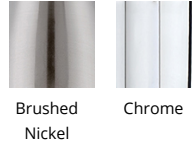
- For use with any of our Quick Connect™ pendants
- 60W integral electronic transformer included
- Smooth and continuous ELV dimming
- Mounts over a standard 4" junction box
- Includes optional decorative collar for shallow junction box
- Swivels up to 45° in either direction
- 5 year warranty

SPECIFICATIONS

Construction:	Plated aluminum
Power:	Max 60W
Input:	120 VAC, 50/60Hz
Finish:	Electroplated: Chrome, Brushed Nickel
Standards:	UL, cUL, Dry Location Listed



FINISHES:



Fixture Type: _____

Catalog Number: _____

Project: _____

Location: _____