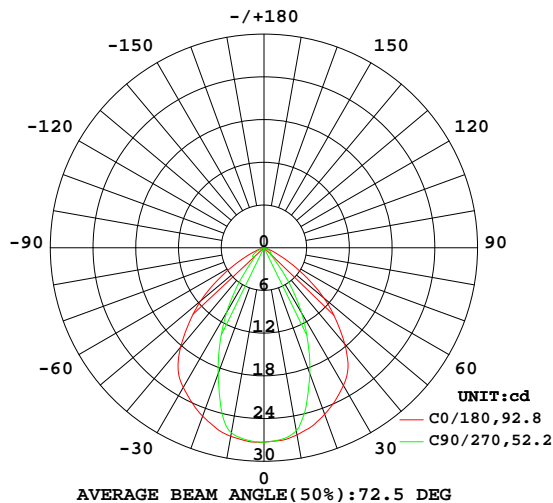


## LUMINAIRE PHOTOMETRIC TEST REPORT

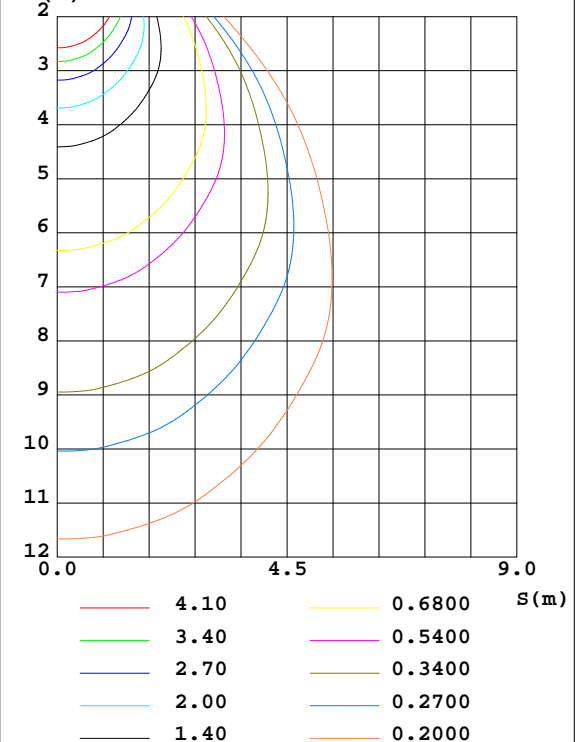
Test:U:120.14V I:0.0308A P:2.6091W PF:0.7040 Freq:59.98Hz Lamp Flux:36.2038x1 lm		
NAME: 5222-27BZ(5X4-3W)	TYPE:Surface-mounted Luminaire	HEIGHT:
SPEC.:	DIM.:	SERIAL No.:
MFR.: WAC Lighting	SUR.:	Shielding Angle:

DATA OF LAMP		PHOTOMETRIC DATA				Eff: 13.88 lm/W
MODEL		Imax(cd)	27.35	S/MH(C0/180)	1.22	
NOMINAL POWER(W)		LOR(%)	100.0	S/MH(C90/270)	0.81	
RATED VOLTAGE(V)	120	TOTAL FLUX(lm)	36.204	$\eta$ UP,DN(C0-180)	0.0,50.3	
NOMINAL FLUX(lm)	36.2038	CIE CLASS	DIRECT	$\eta$ UP,DN(C180-360)	0.0,49.7	
LAMPS INSIDE	1	$\eta$ up(%)	0.0	CIBSE SHR NOM	1.00	
TEST VOLTAGE(V)	120	$\eta$ down(%)	100.0	CIBSE SHR MAX	1.00	

LUMINOUS INTENSITY DISTRIBUTION DIAGRAM



C0 PLANE ISOLUX DIAGRAM (UNIT:lx)



C Range: 0 - 360DEG  
C Interval: 22.5DEG  
Test Speed: HIGH  
Temperature:25.3DEG  
Operators:Oliver  
Test Date:2019-11-19

$\gamma$  Range: 0 - 180DEG  
 $\gamma$  Interval: 1.0DEG  
Test System:EVERFINE GO-R5000\_V2 SYSTEM V2.0.366  
Humidity:65.0%  
Test Distance:2.499m [K=1.0000]  
Remarks:

## ZONAL FLUX DIAGRAM

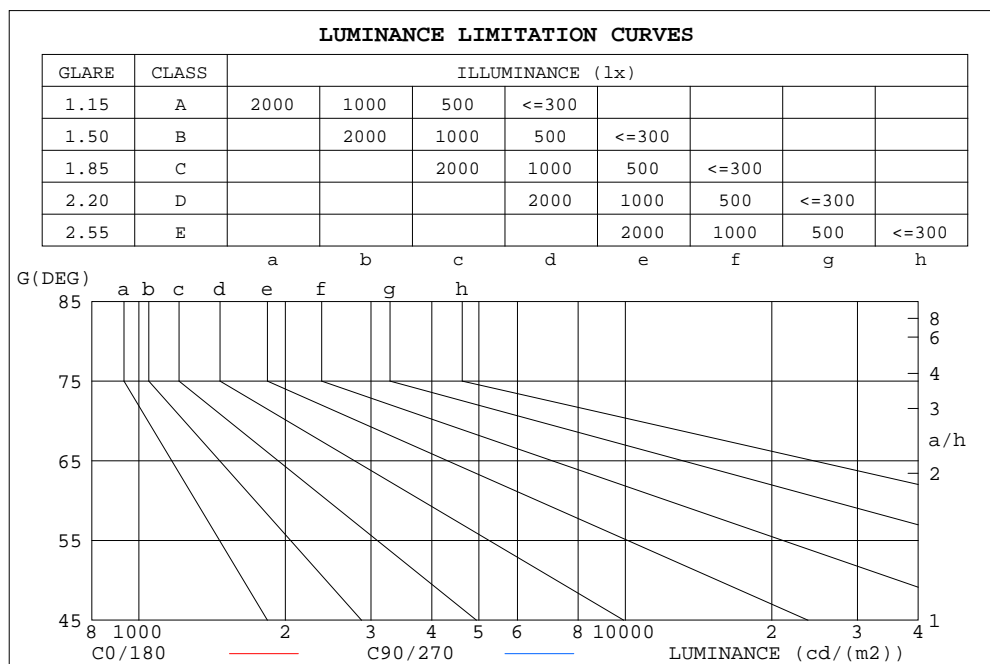
## ZONAL FLUX DIAGRAM:

$\gamma$	C0	C45	C90	C135	C180	C225	C270	C315	$\gamma$	$\Phi$ zone	$\Phi$ total	%lum, lamp
10	26.89	26.74	26.39	26.62	26.68	26.48	26.11	26.67	0- 10	2.574	2.574	7.11,7.11
20	25.18	22.92	18.83	23.04	24.90	22.34	18.83	22.91	10- 20	6.966	9.540	26.4,26.4
30	22.68	15.59	10.55	15.80	22.34	15.45	10.58	16.16	20- 30	8.895	18.44	50.9,50.9
40	18.23	8.593	3.217	8.837	17.65	8.391	2.996	9.224	30- 40	8.159	26.59	73.5,73.5
50	11.65	2.629	1.977	3.037	10.99	2.748	1.160	3.345	40- 50	5.308	31.90	88.1,88.1
60	4.716	0.9574	1.484	1.199	4.228	1.159	0.9621	1.374	50- 60	2.900	34.80	96.1,96.1
70	0.9622	0.4427	0.4609	0.4858	0.8123	0.5164	0.2925	0.6254	60- 70	1.147	35.95	99.3,99.3
80	0.0275	0.0552	0.0718	0.0226	0.0164	0.0612	0.0495	0.0887	70- 80	0.2444	36.19	100,100
90	0	0	0	0	0	0	0	0	80- 90	0.0078	36.20	100,100
100	0	0	0	0	0	0	0	0	90-100	0	36.20	100,100
110	0	0	0	0	0	0	0	0	100-110	0	36.20	100,100
120	0	0	0	0	0	0	0	0	110-120	0	36.20	100,100
130	0	0	0	0	0	0	0	0	120-130	0	36.20	100,100
140	0	0	0	0	0	0	0	0.0000	130-140	0.0000	36.20	100,100
150	0	0	0	0	0.0025	0.0037	0.0029	0.0049	140-150	0.0004	36.20	100,100
160	0	0	0	0	0.0046	0.0049	0.0090	0.0082	150-160	0.0012	36.20	100,100
170	0	0	0.0041	0	0.0058	0.0045	0.0062	0.0090	160-170	0.0010	36.20	100,100
180	0.0045	0.0070	0.0049	0.0069	0.0054	0.0045	0.0053	0.0058	170-180	0.0004	36.20	100,100
DEG	LUMINOUS INTENSITY:cd									UNIT:lm		

C Range: 0 - 360DEG  
 C Interval: 22.5DEG  
 Test Speed: HIGH  
 Temperature:25.3DEG  
 Operators:Oliver  
 Test Date:2019-11-19

$\gamma$  Range: 0 - 180DEG  
 $\gamma$  Interval: 1.0DEG  
 Test System:EVERFINE GO-R5000\_V2 SYSTEM V2.0.366  
 Humidity:65.0%  
 Test Distance:2.499m [K=1.0000]  
 Remarks:

## LUMINANCE LIMITATION CURVES



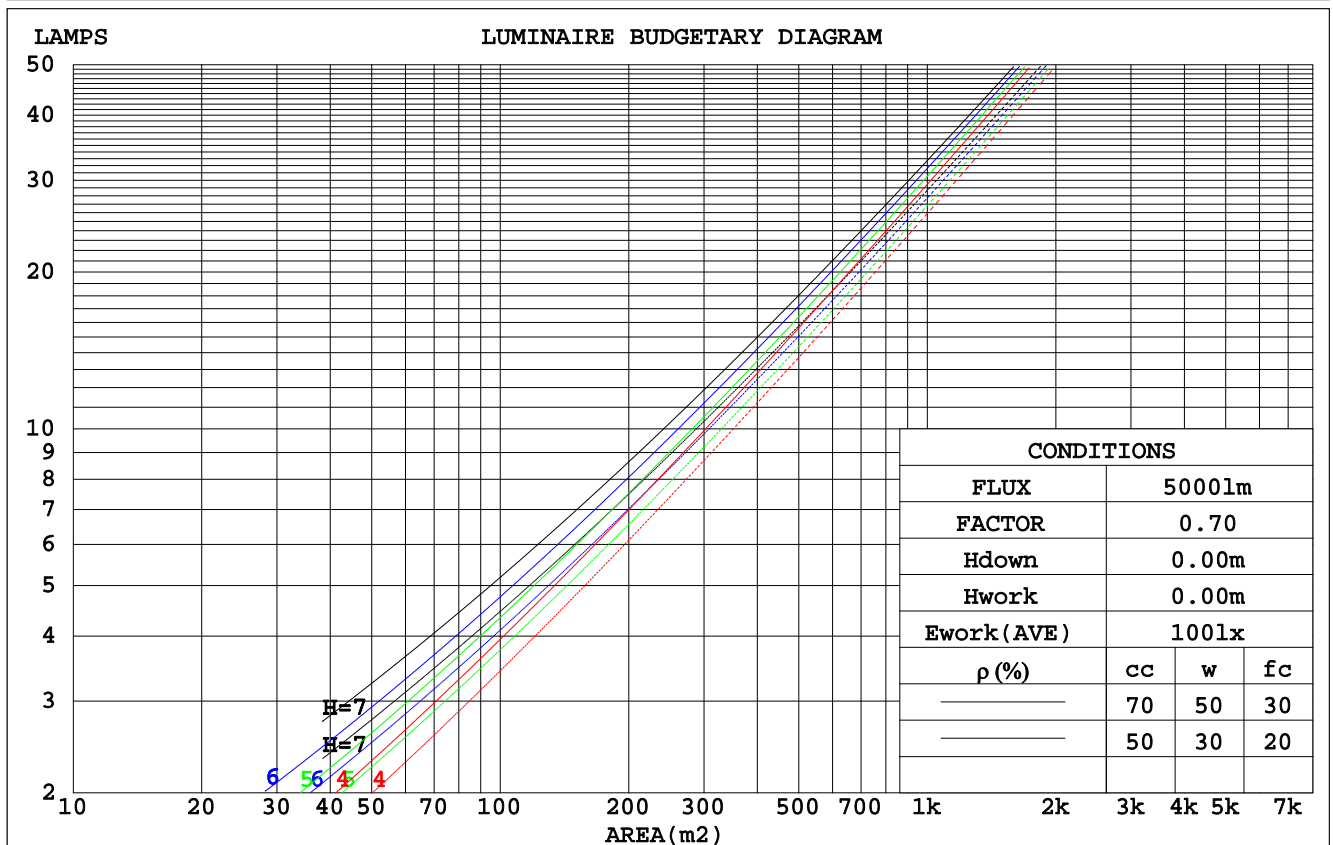
LUMINANCE cd/(m2)		
G( DEG )	C0/180	C90/270
85	0	0
80	2	4
75	9	8
70	28	13
65	55	22
60	94	30
55	139	34
50	180	31
45	209	27

C Range: 0 - 360DEG  
 C Interval: 22.5DEG  
 Test Speed: HIGH  
 Temperature: 25.3DEG  
 Operators: Oliver  
 Test Date: 2019-11-19

γ Range: 0 - 180DEG  
 γ Interval: 1.0DEG  
 Test System: EVERFINE GO-R5000\_V2 SYSTEM V2.0.366  
 Humidity: 65.0%  
 Test Distance: 2.499m [K=1.0000]  
 Remarks:

## CU AND LUMINAIRE BUDGETARY ESTIMATE DIAGRAM

pcc	80%			70%			50%			30%			10%			0
ρw	50%	30%	10%	50%	30%	10%	50%	30%	10%	50%	30%	10%	50%	30%	10%	0
ρfc	20%			20%			20%			20%			20%			0
RCR	RCR:Room Cavity Ratio						Coefficients of Utilization(CU)									
0.0	1.19	1.19	1.19	1.16	1.16	1.16	1.11	1.11	1.11	1.06	1.06	1.06	1.02	1.02	1.02	.00
1.0	1.09	1.06	1.03	1.07	1.04	1.02	1.03	1.01	.99	.99	.97	.96	.95	.94	.93	.91
2.0	.99	.94	.90	.98	.93	.89	.94	.91	.87	.91	.88	.85	.88	.86	.84	.82
3.0	.91	.85	.80	.89	.84	.79	.86	.82	.78	.84	.80	.77	.82	.78	.75	.74
4.0	.83	.76	.71	.82	.76	.71	.80	.74	.70	.77	.73	.69	.75	.71	.68	.66
5.0	.76	.69	.64	.75	.69	.64	.73	.68	.63	.72	.67	.63	.70	.66	.62	.60
6.0	.70	.63	.58	.70	.63	.58	.68	.62	.57	.66	.61	.57	.65	.60	.57	.55
7.0	.65	.58	.53	.64	.58	.53	.63	.57	.53	.62	.56	.52	.61	.56	.52	.50
8.0	.61	.54	.49	.60	.53	.49	.59	.53	.48	.58	.52	.48	.57	.52	.48	.46
9.0	.56	.50	.45	.56	.49	.45	.55	.49	.45	.54	.48	.44	.53	.48	.44	.43
10.0	.53	.46	.42	.52	.46	.42	.51	.46	.41	.51	.45	.41	.50	.45	.41	.40



C Range: 0 - 360DEG  
 C Interval: 22.5DEG  
 Test Speed: HIGH  
 Temperature: 25.3DEG  
 Operators: Oliver  
 Test Date: 2019-11-19

γ Range: 0 - 180DEG  
 γ Interval: 1.0DEG  
 Test System: EVERFINE GO-R5000\_V2 SYSTEM V2.0.366  
 Humidity: 65.0%  
 Test Distance: 2.499m [K=1.0000]  
 Remarks:

## WEC AND CCEC

ρcc	80%			70%			50%			30%			10%			0
ρw	50%	30%	10%	50%	30%	10%	50%	30%	10%	50%	30%	10%	50%	30%	10%	0
ρfc	20%			20%			20%			20%			20%			0
RCR	RCR:Room Cavity Ratio						Wall Exitance Coefficients(WEC)									
0.0																
1.0	.212	.120	.038	.205	.117	.037	.192	.110	.035	.180	.104	.033	.170	.098	.032	
2.0	.207	.113	.035	.201	.111	.034	.190	.106	.033	.180	.101	.032	.170	.096	.030	
3.0	.198	.105	.031	.193	.103	.031	.183	.099	.030	.174	.096	.029	.166	.092	.028	
4.0	.188	.098	.029	.183	.096	.028	.175	.093	.028	.167	.090	.027	.160	.087	.027	
5.0	.178	.091	.026	.174	.089	.026	.167	.087	.026	.160	.084	.025	.154	.082	.025	
6.0	.169	.085	.024	.165	.084	.024	.159	.081	.024	.153	.079	.023	.147	.078	.023	
7.0	.160	.079	.022	.157	.078	.022	.151	.077	.022	.146	.075	.022	.141	.073	.022	
8.0	.152	.074	.021	.149	.074	.021	.144	.072	.021	.139	.071	.020	.135	.069	.020	
9.0	.145	.070	.020	.142	.069	.019	.138	.068	.019	.133	.067	.019	.129	.066	.019	
10.0	.138	.066	.018	.136	.066	.018	.131	.064	.018	.127	.063	.018	.124	.062	.018	

ρcc	80%			70%			50%			30%			10%			0
ρw	50%	30%	10%	50%	30%	10%	50%	30%	10%	50%	30%	10%	50%	30%	10%	0
ρfc	20%			20%			20%			20%			20%			0
RCR	RCR:Room Cavity Ratio						Ceiling Cavity Exitance Coefficients(CCEC)									
0.0	.191	.191	.191	.163	.163	.163	.111	.111	.111	.064	.064	.064	.020	.020	.020	
1.0	.174	.157	.142	.149	.135	.122	.102	.093	.085	.058	.054	.049	.019	.017	.016	
2.0	.161	.132	.108	.138	.114	.094	.094	.079	.065	.054	.046	.038	.017	.015	.012	
3.0	.151	.114	.085	.129	.098	.073	.089	.068	.051	.051	.040	.030	.016	.013	.010	
4.0	.142	.100	.068	.122	.086	.059	.084	.060	.041	.048	.035	.024	.016	.011	.008	
5.0	.134	.089	.055	.115	.077	.048	.079	.054	.034	.046	.031	.020	.015	.010	.007	
6.0	.127	.080	.046	.109	.069	.040	.075	.048	.028	.044	.028	.017	.014	.009	.006	
7.0	.121	.072	.039	.104	.063	.034	.072	.044	.024	.042	.026	.014	.013	.008	.005	
8.0	.115	.066	.033	.099	.058	.029	.069	.040	.020	.040	.024	.012	.013	.008	.004	
9.0	.110	.061	.029	.095	.053	.025	.066	.037	.018	.038	.022	.011	.012	.007	.004	
10.0	.105	.057	.025	.091	.050	.022	.063	.035	.016	.037	.021	.009	.012	.007	.003	

C Range: 0 - 360DEG  
 C Interval: 22.5DEG  
 Test Speed: HIGH  
 Temperature: 25.3DEG  
 Operators: Oliver  
 Test Date: 2019-11-19

γ Range: 0 - 180DEG  
 γ Interval: 1.0DEG  
 Test System: EVERFINE GO-R5000\_V2 SYSTEM V2.0.366  
 Humidity: 65.0%  
 Test Distance: 2.499m [K=1.0000]  
 Remarks:

UGR(Unified Glare Rating) Table

ceiling/cavity	0.7	0.7	0.5	0.5	0.3	0.7	0.7	0.5	0.5	0.3
walls	0.5	0.3	0.5	0.3	0.3	0.5	0.3	0.5	0.3	0.3
working plane	0.2	0.2	0.2	0.2	0.2	0.2	0.2	0.2	0.2	0.2
Room dimensions	Viewed crosswise					Viewed endwise				
x = 2H y = 2H	16.3	17.5	16.5	17.6	17.8	9.1	10.2	9.3	10.4	10.6
3H	16.3	17.4	16.6	17.6	17.8	9.4	10.4	9.6	10.6	10.9
4H	16.2	17.2	16.5	17.5	17.7	9.4	10.4	9.7	10.6	10.8
6H	16.1	17.1	16.5	17.3	17.6	9.3	10.2	9.6	10.5	10.8
8H	16.1	17.0	16.4	17.3	17.5	9.3	10.2	9.6	10.4	10.7
12H	16.1	16.9	16.4	17.2	17.5	9.2	10.1	9.5	10.4	10.6
4H 2H	16.1	17.1	16.3	17.3	17.5	9.3	10.3	9.6	10.6	10.8
3H	16.1	17.0	16.4	17.2	17.5	9.7	10.6	10.0	10.8	11.1
4H	16.0	16.8	16.4	17.1	17.4	9.7	10.5	10.1	10.8	11.1
6H	15.9	16.6	16.3	17.0	17.3	9.7	10.3	10.0	10.7	11.0
8H	15.9	16.5	16.3	16.9	17.2	9.6	10.3	10.0	10.6	11.0
12H	15.8	16.4	16.3	16.8	17.2	9.6	10.1	10.0	10.5	10.9
8H 4H	15.9	16.5	16.3	16.9	17.3	9.6	10.3	10.0	10.6	11.0
6H	15.8	16.3	16.2	16.7	17.1	9.6	10.1	10.0	10.5	10.9
8H	15.8	16.2	16.2	16.6	17.1	9.6	10.0	10.0	10.4	10.9
12H	15.7	16.1	16.2	16.5	17.0	9.5	9.9	10.0	10.3	10.8
12H 4H	15.8	16.4	16.3	16.8	17.2	9.6	10.2	10.0	10.5	10.9
6H	15.8	16.2	16.2	16.6	17.1	9.6	10.0	10.0	10.4	10.9
8H	15.7	16.1	16.2	16.5	17.0	9.5	9.9	10.0	10.3	10.8
Variations with the observer position at spacings:										
S = 1.0H	+ 1.6 / - 2.1					+ 1.4 / - 1.7				
1.5H	+ 2.2 / - 5.6					+ 1.9 / - 1.5				
2.0H	+ 4.3 / - 9.2					+ 1.3 / - 1.3				

CIE Pub.117, 36.20 lm Total Lamp Luminous Flux Correct (8log(F/F0) = -11.5)

C Range: 0 - 360DEG  
 C Interval: 22.5DEG  
 Test Speed: HIGH  
 Temperature: 25.3DEG  
 Operators: Oliver  
 Test Date: 2019-11-19

γ Range: 0 - 180DEG  
 γ Interval: 1.0DEG  
 Test System: EVERFINE GO-R5000\_V2 SYSTEM V2.0.366  
 Humidity: 65.0%  
 Test Distance: 2.499m [K=1.0000]  
 Remarks:

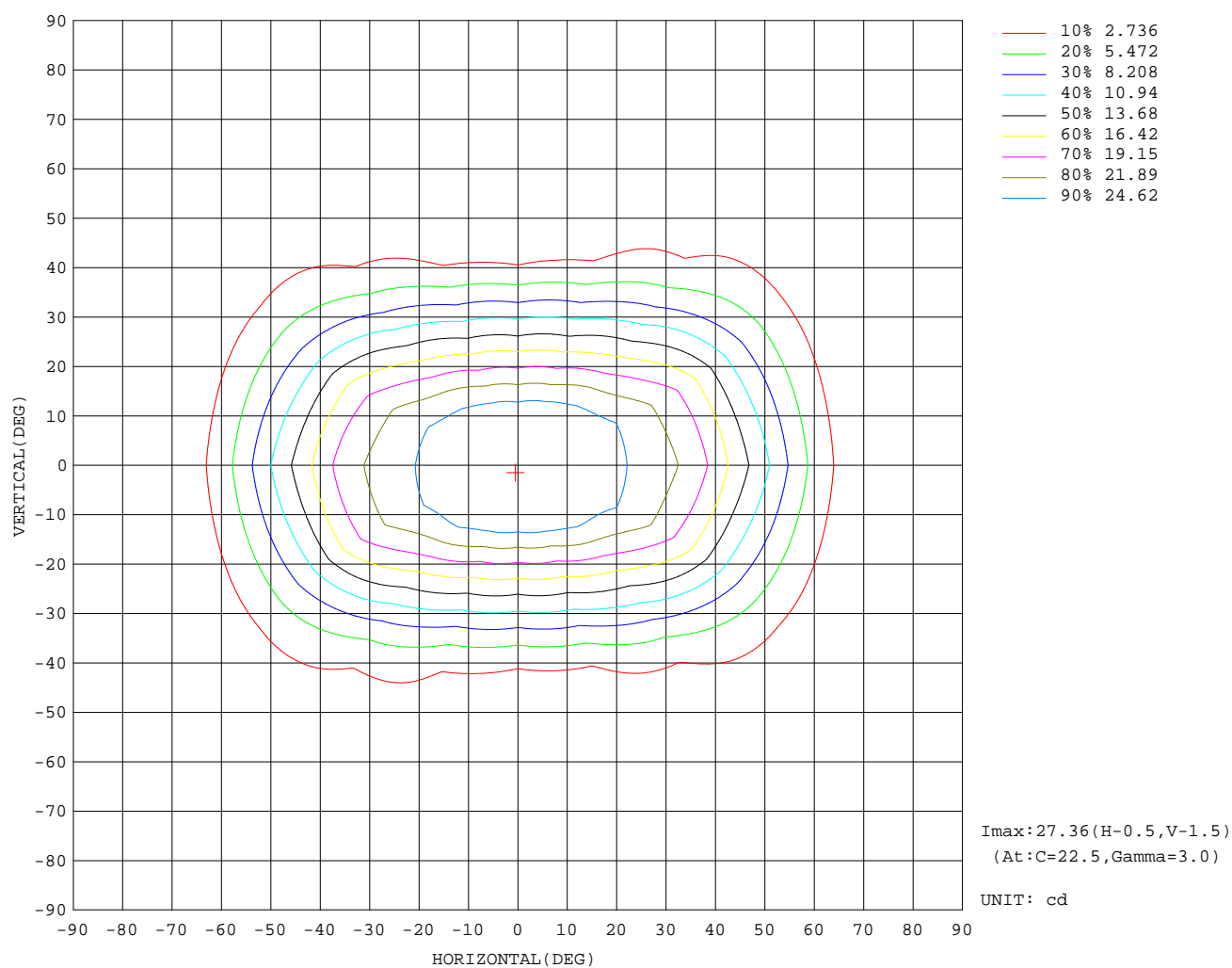
## UTILIZATION FACTORS TABLE

REFLECTANCE										
Ceiling	0.8	0.8	0.8	0.7	0.7	0.7	0.5	0.5	0.5	0
Walls	0.7	0.5	0.3	0.7	0.5	0.3	0.7	0.5	0.3	0
Working plane	0.2	0.2	0.2	0.2	0.2	0.2	0.2	0.2	0.2	0
ROOM INDEX	UTILIZATION FACTORS(PERCENT) $k(RI) \times RCR = 5$									
k = 0.60	75	66	61	74	66	61	73	65	61	56
0.80	84	76	70	83	75	70	82	75	70	65
1.00	91	83	78	90	83	78	88	83	77	72
1.25	96	89	84	95	89	84	93	87	83	78
1.50	100	93	89	99	93	88	96	91	87	82
2.00	104	99	95	103	98	94	100	96	92	86
2.50	107	102	98	105	100	97	102	98	95	88
3.00	109	104	101	107	103	100	103	100	98	91
4.00	111	108	105	109	106	103	106	103	101	93
5.00	113	110	107	111	108	106	107	105	103	95
ROOM INDEX	UF(total)									Direct
According to DIN EN 13032-2 2004				Suspended				SHRNOM = 1.25		

C Range: 0 - 360DEG  
 C Interval: 22.5DEG  
 Test Speed: HIGH  
 Temperature: 25.3DEG  
 Operators: Oliver  
 Test Date: 2019-11-19

γ Range: 0 - 180DEG  
 γ Interval: 1.0DEG  
 Test System: EVERFINE GO-R5000\_V2 SYSTEM V2.0.366  
 Humidity: 65.0%  
 Test Distance: 2.499m [K=1.0000]  
 Remarks:

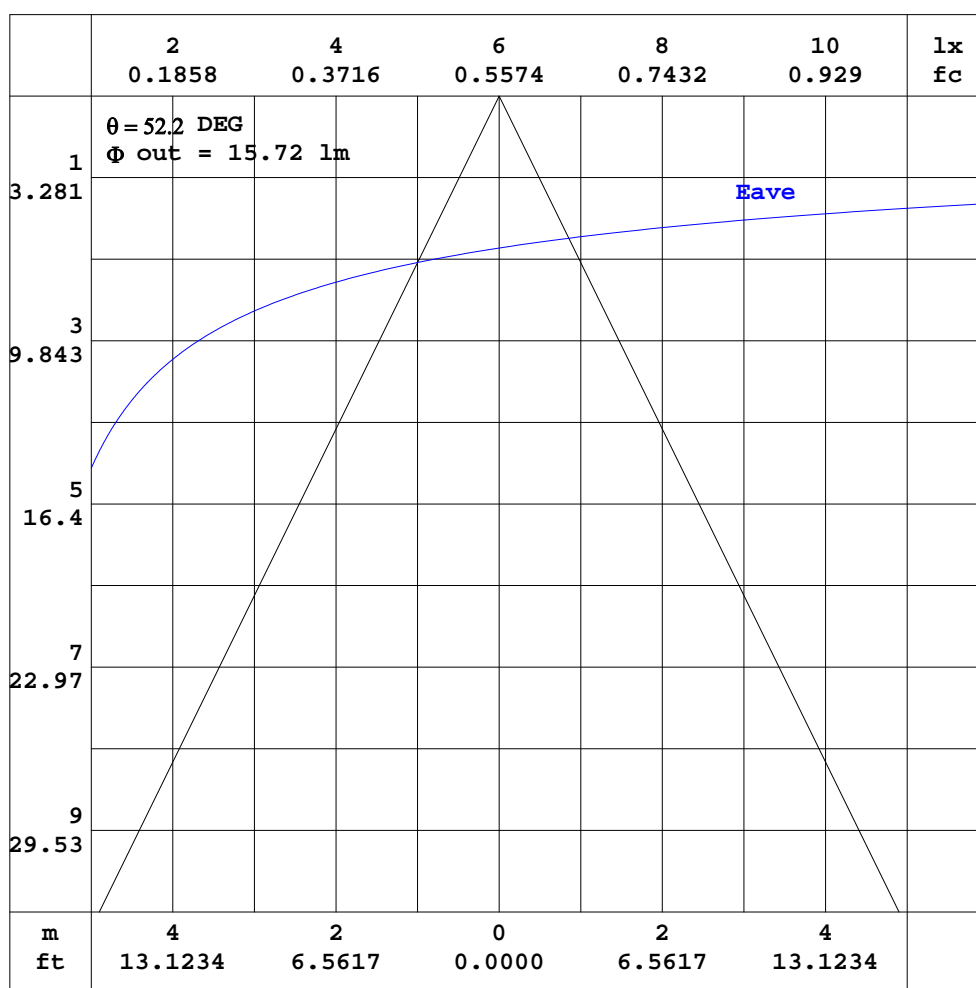
## ISOCANDELA DIAGRAM



C Range: 0 - 360DEG  
C Interval: 22.5DEG  
Test Speed: HIGH  
Temperature: 25.3DEG  
Operators: Oliver  
Test Date: 2019-11-19

$\gamma$  Range: 0 - 180DEG  
 $\gamma$  Interval: 1.0DEG  
Test System: EVERFINE GO-R5000\_V2 SYSTEM V2.0.366  
Humidity: 65.0%  
Test Distance: 2.499m [K=1.0000]  
Remarks:

## AAI CURVES

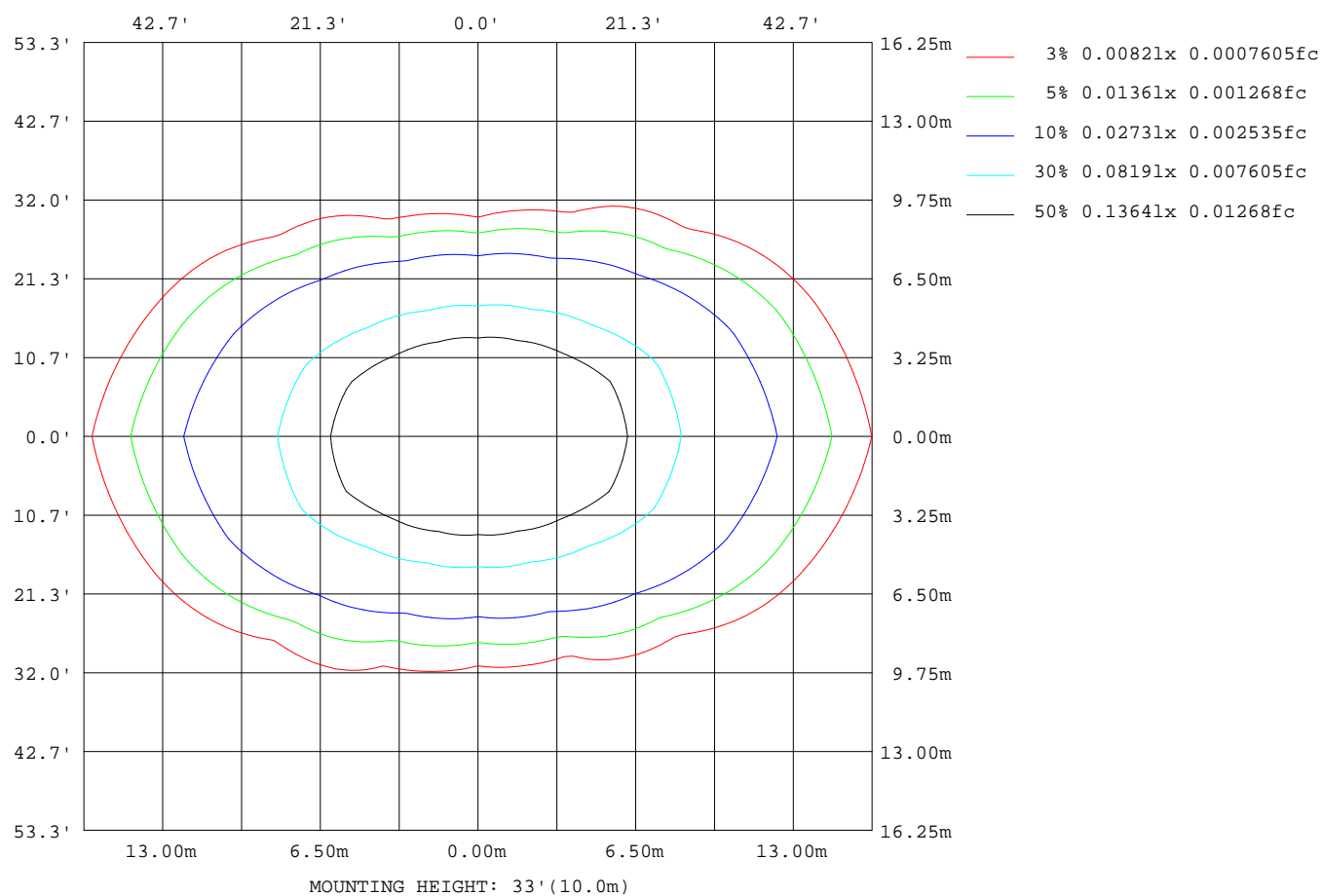


Note: The Curves indicate the illuminated area and the average illumination when the luminaire is at different distance.

C Range: 0 - 360DEG  
C Interval: 22.5DEG  
Test Speed: HIGH  
Temperature: 25.3DEG  
Operators: Oliver  
Test Date: 2019-11-19

$\gamma$  Range: 0 - 180DEG  
 $\gamma$  Interval: 1.0DEG  
Test System: EVERFINE GO-R5000\_V2 SYSTEM V2.0.366  
Humidity: 65.0%  
Test Distance: 2.499m [K=1.0000]  
Remarks:

## ISOLUX DIAGRAM



C Range: 0 - 360DEG  
 C Interval: 22.5DEG  
 Test Speed: HIGH  
 Temperature: 25.3DEG  
 Operators: Oliver  
 Test Date: 2019-11-19

γ Range: 0 - 180DEG  
 γ Interval: 1.0DEG  
 Test System: EVERFINE GO-R5000\_V2 SYSTEM V2.0.366  
 Humidity: 65.0%  
 Test Distance: 2.499m [K=1.0000]  
 Remarks:

## LED Avg.L Report

Test:U:120.14V I:0.0308A P:2.6091W PF:0.7040 Freq:59.98Hz Lamp Flux:36.2038x1 lm		
NAME: 5222-27BZ(5X4-3W)	TYPE:Surface-mounted Luminaire	HEIGHT:
SPEC.:	DIM.:	SERIAL No.:
MFR.: WAC Lighting	SUR.:	Shielding Angle:

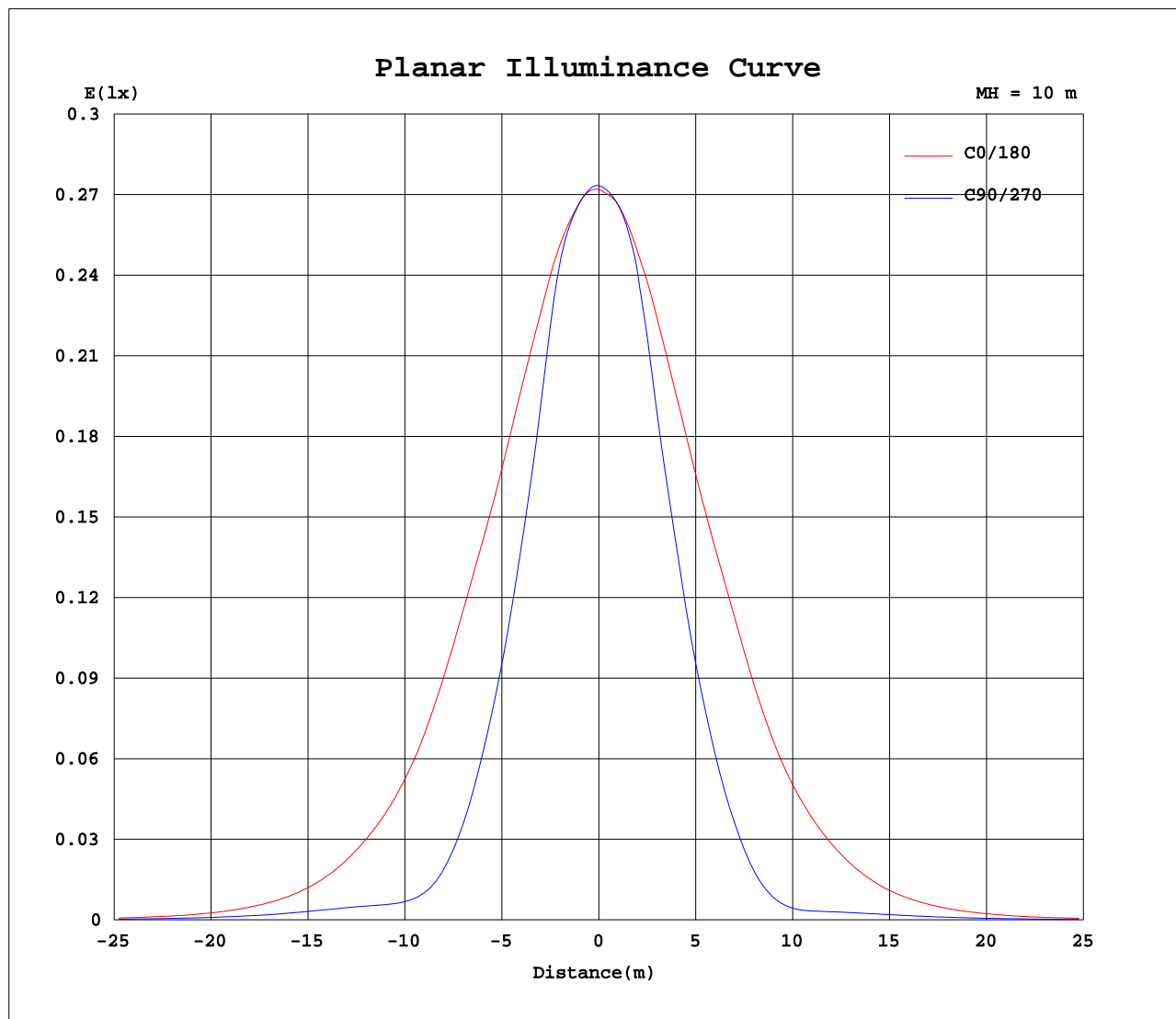
AvgL	cd/m2
L_0~180(65)av	51
L_0~180(75)av	7
L_0~180(85)av	0
L_90~270(65)av	18
L_90~270(75)av	6
L_90~270(85)av	0
L_45(65)av	20
L_45(75)av	10
L_45(85)av	0

Standard: GB/T 29293-2012

C Range: 0 - 360DEG  
 C Interval: 22.5DEG  
 Test Speed: HIGH  
 Temperature:25.3DEG  
 Operators:Oliver  
 Test Date:2019-11-19

γ Range: 0 - 180DEG  
 γ Interval: 1.0DEG  
 Test System:EVERFINE GO-R5000\_V2 SYSTEM V2.0.366  
 Humidity:65.0%  
 Test Distance:2.499m [K=1.0000]  
 Remarks:

## Planar Illuminance Curve



C Range: 0 - 360DEG  
C Interval: 22.5DEG  
Test Speed: HIGH  
Temperature: 25.3DEG  
Operators: Oliver  
Test Date: 2019-11-19

$\gamma$  Range: 0 - 180DEG  
 $\gamma$  Interval: 1.0DEG  
Test System: EVERFINE GO-R5000\_V2 SYSTEM V2.0.366  
Humidity: 65.0%  
Test Distance: 2.499m [K=1.0000]  
Remarks:

## LUMINOUS DISTRIBUTION INTENSITY DATA

Table--1

UNIT: cd

C(DEG) γ (DEG)	0	22.5	45	67.5	90	112.5	135	157.5	180	202.5	225	247.5	270	292.5	315	337.5			
0	27.3	27.3	27.3	27.3	27.3	27.3	27.3	27.3	27.3	27.3	27.3	27.3	27.3	27.3	27.3	27.3			
5	27.3	27.3	27.2	27.1	27.1	27.2	27.2	27.2	27.2	27.1	27.1	27.1	27.0	27.0	27.1	27.3			
10	26.9	26.9	26.7	26.6	26.4	26.4	26.6	26.6	26.7	26.6	26.5	26.3	26.1	26.4	26.7	26.8			
15	26.2	26.2	25.7	24.2	23.3	24.2	25.5	25.9	26.0	25.8	25.0	23.7	23.0	23.9	25.4	26.1			
20	25.2	25.1	22.9	19.8	18.8	19.9	23.0	24.8	24.9	24.6	22.3	19.6	18.8	19.9	22.9	25.1			
25	24.0	23.7	19.2	15.8	14.6	15.9	19.4	23.4	23.7	23.1	18.8	15.7	14.6	16.0	19.4	23.7			
30	22.7	21.6	15.6	11.8	10.5	11.9	15.8	21.6	22.3	20.8	15.4	11.7	10.6	12.1	16.2	21.6			
35	21.0	18.9	12.1	7.82	6.47	7.95	12.3	19.0	20.6	18.2	11.9	7.81	6.57	8.19	12.6	19.3			
40	18.2	15.4	8.59	4.23	3.22	4.51	8.84	15.4	17.6	14.6	8.39	4.23	3.00	4.62	9.22	16.0			
45	14.9	11.4	5.14	2.06	1.92	2.50	5.50	11.4	14.3	10.8	5.12	1.90	1.24	2.26	5.88	12.1			
50	11.6	7.71	2.63	1.59	1.98	2.15	3.04	7.77	11.0	7.31	2.75	1.40	1.16	1.72	3.34	8.45			
55	8.01	4.70	1.40	1.58	1.95	2.15	1.76	4.69	7.36	4.40	1.61	1.46	1.20	1.84	1.95	5.33			
60	4.72	2.47	0.96	1.28	1.48	1.75	1.20	2.44	4.23	2.28	1.16	1.26	0.96	1.59	1.37	2.88			
65	2.33	1.15	0.70	0.83	0.91	1.15	0.82	1.11	2.02	1.06	0.84	0.84	0.59	1.08	0.99	1.38			
70	0.96	0.47	0.44	0.44	0.46	0.62	0.49	0.40	0.81	0.45	0.52	0.44	0.29	0.58	0.63	0.59			
75	0.22	0.13	0.23	0.20	0.20	0.28	0.22	0.08	0.15	0.12	0.26	0.19	0.13	0.25	0.33	0.19			
80	0.03	0.02	0.06	0.07	0.07	0.09	0.02	0.01	0.02	0.02	0.06	0.07	0.05	0.09	0.09	0.03			
85	0.00	0.00	0.00	0.00	0.00	0.00	0.00	0.00	0.00	0.00	0.00	0.00	0.00	0.00	0.00	0.00			
90	0.00	0.00	0.00	0.00	0.00	0.00	0.00	0.00	0.00	0.00	0.00	0.00	0.00	0.00	0.00	0.00			
95	0.00	0.00	0.00	0.00	0.00	0.00	0.00	0.00	0.00	0.00	0.00	0.00	0.00	0.00	0.00	0.00			
100	0.00	0.00	0.00	0.00	0.00	0.00	0.00	0.00	0.00	0.00	0.00	0.00	0.00	0.00	0.00	0.00			
105	0.00	0.00	0.00	0.00	0.00	0.00	0.00	0.00	0.00	0.00	0.00	0.00	0.00	0.00	0.00	0.00			
110	0.00	0.00	0.00	0.00	0.00	0.00	0.00	0.00	0.00	0.00	0.00	0.00	0.00	0.00	0.00	0.00			
115	0.00	0.00	0.00	0.00	0.00	0.00	0.00	0.00	0.00	0.00	0.00	0.00	0.00	0.00	0.00	0.00			
120	0.00	0.00	0.00	0.00	0.00	0.00	0.00	0.00	0.00	0.00	0.00	0.00	0.00	0.00	0.00	0.00			
125	0.00	0.00	0.00	0.00	0.00	0.00	0.00	0.00	0.00	0.00	0.00	0.00	0.00	0.00	0.00	0.00			
130	0.00	0.00	0.00	0.00	0.00	0.00	0.00	0.00	0.00	0.00	0.00	0.00	0.00	0.00	0.00	0.00			
135	0.00	0.00	0.00	0.00	0.00	0.00	0.00	0.00	0.00	0.00	0.00	0.00	0.00	0.00	0.00	0.00			
140	0.00	0.00	0.00	0.00	0.00	0.00	0.00	0.00	0.00	0.00	0.00	0.00	0.00	0.00	0.00	0.00			
145	0.00	0.00	0.00	0.00	0.00	0.00	0.00	0.00	0.00	0.00	0.00	0.00	0.00	0.00	0.00	0.00			
150	0.00	0.00	0.00	0.00	0.00	0.00	0.00	0.00	0.00	0.00	0.00	0.00	0.00	0.00	0.00	0.00			
155	0.00	0.00	0.00	0.00	0.00	0.00	0.00	0.00	0.00	0.01	0.00	0.01	0.01	0.01	0.01	0.01			
160	0.00	0.00	0.00	0.00	0.00	0.00	0.00	0.00	0.00	0.00	0.00	0.01	0.01	0.01	0.01	0.01			
165	0.00	0.00	0.00	0.00	0.00	0.00	0.00	0.00	0.00	0.00	0.00	0.01	0.01	0.01	0.01	0.01			
170	0.00	0.00	0.00	0.00	0.00	0.01	0.00	0.00	0.01	0.01	0.00	0.01	0.01	0.01	0.01	0.01			
175	0.00	0.00	0.00	0.00	0.00	0.01	0.00	0.00	0.01	0.00	0.00	0.01	0.01	0.01	0.01	0.01			
180	0.00	0.00	0.01	0.01	0.00	0.01	0.01	0.01	0.01	0.00	0.00	0.01	0.01	0.01	0.01	0.01			

C Range: 0 - 360DEG  
 C Interval: 22.5DEG  
 Test Speed: HIGH  
 Temperature: 25.3DEG  
 Operators: Oliver  
 Test Date: 2019-11-19

γ Range: 0 - 180DEG  
 γ Interval: 1.0DEG  
 Test System: EVERFINE GO-R5000\_V2 SYSTEM V2.0.366  
 Humidity: 65.0%  
 Test Distance: 2.499m [K=1.0000]  
 Remarks: