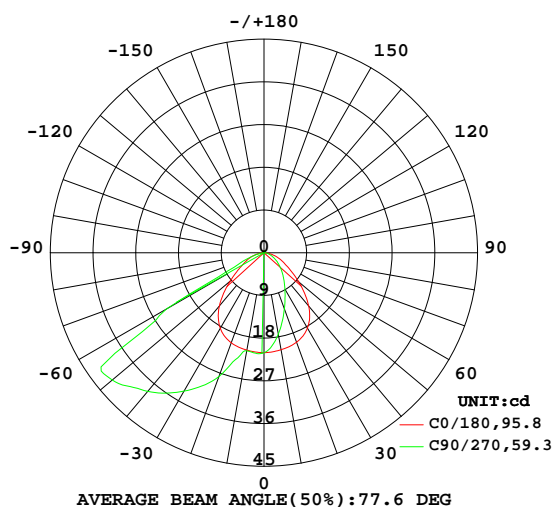


LUMINAIRE PHOTOMETRIC TEST REPORT

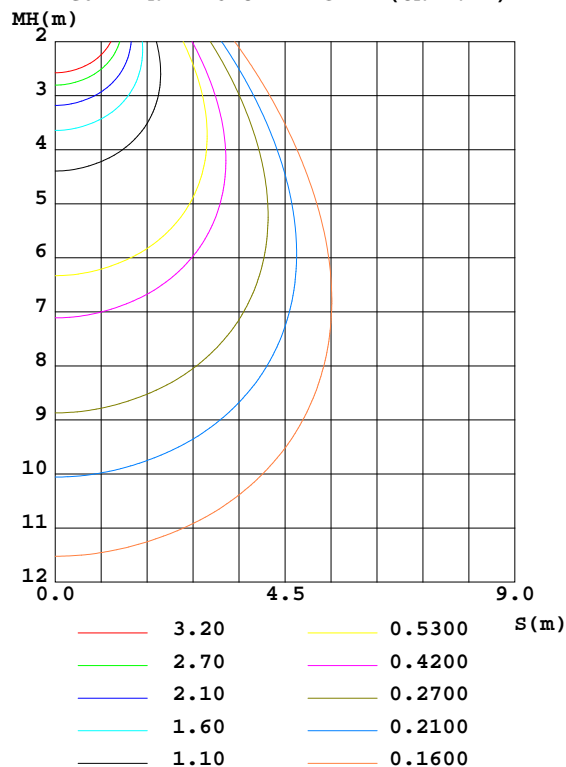
Test:U:120.00V I:0.0169A P:1.8335W PF:0.9025 Freq:59.99Hz Lamp Flux:63.9595x1 lm		
NAME: WL-LED102-30-WT	TYPE: Recessed-mounted Luminaire	HEIGHT:
SPEC.:	DIM.:	SERIAL No.:
MFR.: WAC Lighting	SUR.:	Shielding Angle:

DATA OF LAMP		PHOTOMETRIC DATA				Eff: 34.88 lm/W
MODEL		Imax(cd)	42.40	S/MH(C0/180)	1.28	
NOMINAL POWER(W)		LOR(%)	100.0	S/MH(C90/270)	0.72	
RATED VOLTAGE(V)	120	TOTAL FLUX(lm)	63.960	η UP,DN(C0-180)	0.3,71.9	
NOMINAL FLUX(lm)	63.9595	CIE CLASS	DIRECT	η UP,DN(C180-360)	1.0,26.8	
LAMPS INSIDE	1	η up(%)	1.3	CIBSE SHR NOM	1.50	
TEST VOLTAGE(V)	120	η down(%)	98.7	CIBSE SHR MAX	1.55	

LUMINOUS INTENSITY DISTRIBUTION DIAGRAM



C0 PLANE ISOLUX DIAGRAM (UNIT:lx)



C Range: 0 - 360DEG
 C Interval: 22.5DEG
 Test Speed: HIGH
 Temperature:25.3DEG
 Operators:Oliver
 Test Date:2019-10-11

γ Range: 0 - 180DEG
 γ Interval: 1.0DEG
 Test System:EVERFINE GO-R5000_V2 SYSTEM V2.0.366
 Humidity:65.0%
 Test Distance:2.499m [K=1.0000]
 Remarks:

ZONAL FLUX DIAGRAM

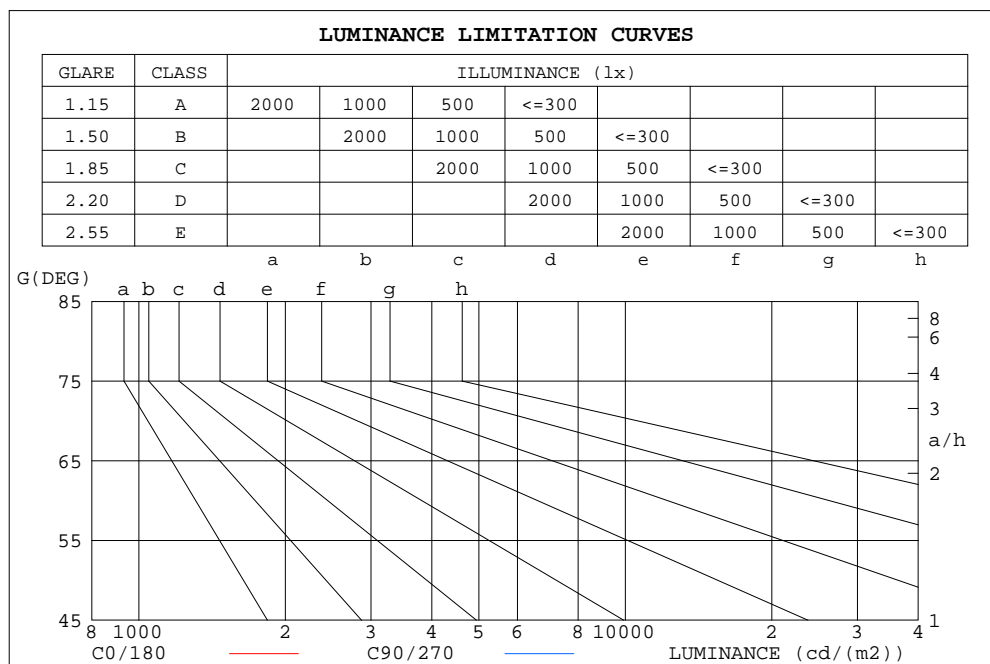
ZONAL FLUX DIAGRAM:

γ	C0	C45	C90	C135	C180	C225	C270	C315	γ	Φ zone	Φ total	$\%lum, lamp$
10	20.83	20.99	21.00	21.02	20.75	18.54	17.43	18.70	0- 10	1.952	1.952	3.05,3.05
20	20.19	22.82	27.75	22.44	20.06	14.63	12.59	14.94	10- 20	5.510	7.462	11.7,11.7
30	18.40	28.09	33.65	27.15	18.32	10.76	8.841	11.04	20- 30	8.953	16.41	25.7,25.7
40	14.63	30.25	38.12	28.92	14.64	7.663	6.250	7.847	30- 40	11.83	28.25	44.2,44.2
50	9.344	30.01	41.72	27.97	9.576	5.307	4.287	5.414	40- 50	13.58	41.83	65.4,65.4
60	5.345	25.50	23.72	21.62	5.523	3.418	2.724	3.488	50- 60	13.13	54.96	85.9,85.9
70	3.180	4.228	3.790	4.227	3.255	1.908	1.510	1.952	60- 70	5.849	60.81	95.1,95.1
80	1.209	1.013	0.8935	0.9880	1.212	0.7204	0.6042	0.7528	70- 80	1.971	62.78	98.2,98.2
90	0.1333	0	0	0	0.1050	0	0	0	80- 90	0.3366	63.11	98.7,98.7
100	0.1628	0	0	0	0.1520	0.0180	0.0129	0.0151	90-100	0.0222	63.14	98.7,98.7
110	0.2154	0	0.0051	0.0056	0.1943	0.0986	0.0656	0.0924	100-110	0.0489	63.18	98.8,98.8
120	0.2801	0	0.0192	0.0210	0.2409	0.2704	0.1204	0.2615	110-120	0.0925	63.28	98.9,98.9
130	0.3494	0.0001	0.0393	0.0411	0.2937	0.3510	0.3162	0.3384	120-130	0.1396	63.42	99.2,99.2
140	0.3829	0.0238	0.0624	0.0630	0.3534	0.3814	0.4243	0.3450	130-140	0.1665	63.58	99.4,99.4
150	0.3419	0.0447	0.1004	0.1268	0.4050	0.3706	0.4536	0.3491	140-150	0.1543	63.74	99.7,99.7
160	0.4209	0.0482	0.1433	0.2302	0.4354	0.4758	0.4383	0.4236	150-160	0.1255	63.86	99.8,99.8
170	0.3093	0.0124	0.1780	0.1921	0.3393	0.3610	0.4027	0.2369	160-170	0.0798	63.94	100,100
180	0.0068	0.0051	0.0051	0.0073	0.0059	0.0068	0.0068	0.0068	170-180	0.0173	63.96	100,100
DEG	LUMINOUS INTENSITY:cd									UNIT:lm		

C Range: 0 - 360DEG
 C Interval: 22.5DEG
 Test Speed: HIGH
 Temperature:25.3DEG
 Operators:Oliver
 Test Date:2019-10-11

γ Range: 0 - 180DEG
 γ Interval: 1.0DEG
 Test System:EVERFINE GO-R5000_V2 SYSTEM V2.0.366
 Humidity:65.0%
 Test Distance:2.499m [K=1.0000]
 Remarks:

LUMINANCE LIMITATION CURVES



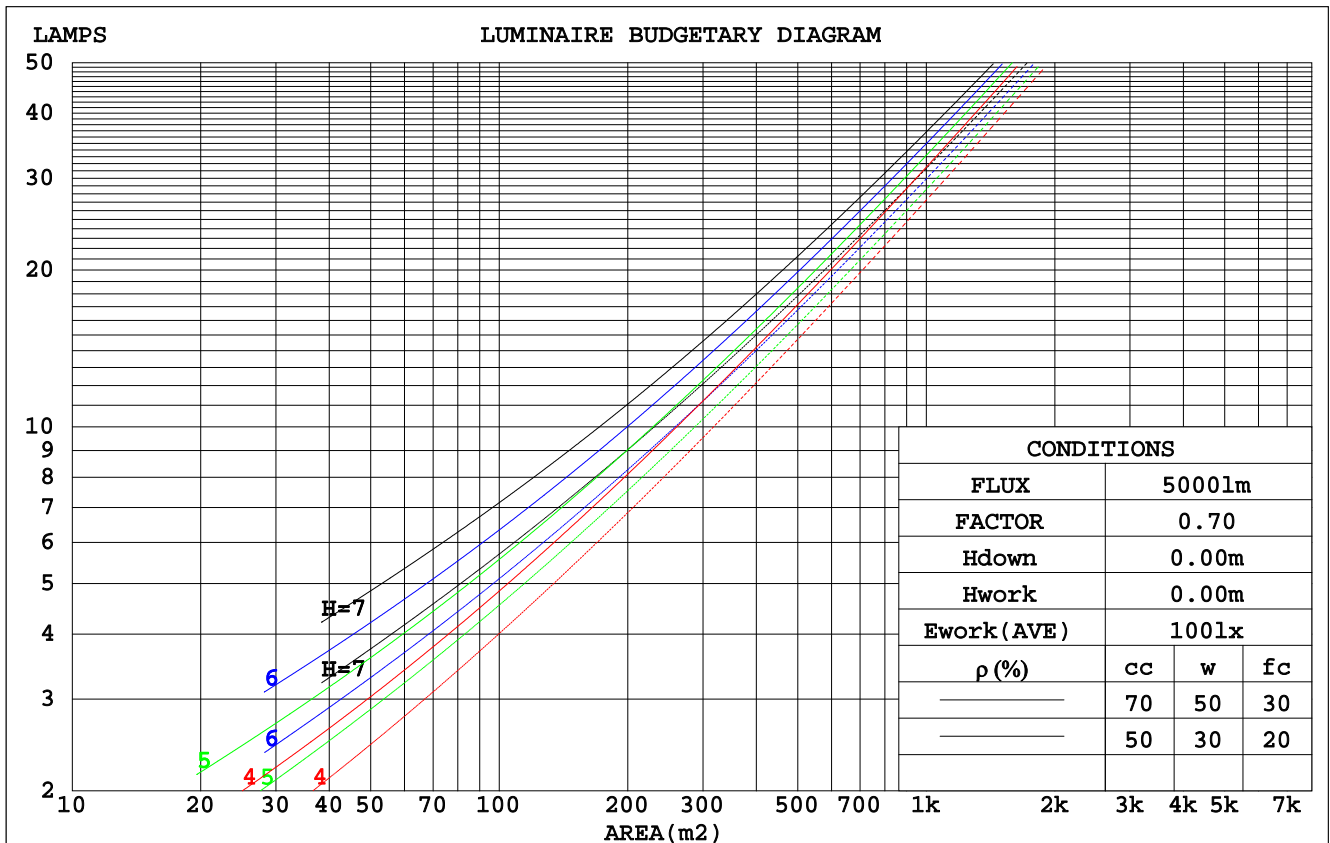
LUMINANCE cd/(m2)		
G(DEG)	C0/180	C90/270
85	50	10
80	70	51
75	84	79
70	94	111
65	99	150
60	108	474
55	124	729
50	147	648
45	171	563

C Range: 0 - 360DEG
C Interval: 22.5DEG
Test Speed: HIGH
Temperature: 25.3DEG
Operators: Oliver
Test Date: 2019-10-11

γ Range: 0 - 180DEG
 γ Interval: 1.0DEG
Test System: EVERFINE GO-R5000_V2 SYSTEM V2.0.366
Humidity: 65.0%
Test Distance: 2.499m [K=1.0000]
Remarks:

CU AND LUMINAIRE BUDGETARY ESTIMATE DIAGRAM

ρ_{cc}	80%			70%			50%			30%			10%			0
ρ_w	50%	30%	10%	50%	30%	10%	50%	30%	10%	50%	30%	10%	50%	30%	10%	0
ρ_{fc}	20%			20%			20%			20%			20%			0
RCR	RCR:Room Cavity Ratio			Coefficients of Utilization(CU)												
0.0	1.19	1.19	1.19	1.16	1.16	1.16	1.10	1.10	1.10	1.05	1.05	1.05	1.01	1.01	1.01	.99
1.0	1.05	1.01	.98	1.03	.99	.96	.98	.96	.93	.94	.92	.90	.91	.89	.87	.85
2.0	.92	.86	.81	.90	.85	.80	.87	.82	.78	.83	.79	.76	.80	.77	.74	.72
3.0	.81	.74	.67	.80	.73	.67	.77	.70	.65	.74	.68	.64	.71	.67	.63	.61
4.0	.72	.63	.57	.71	.63	.57	.68	.61	.56	.65	.60	.55	.63	.58	.54	.52
5.0	.64	.55	.49	.63	.55	.48	.61	.53	.48	.59	.52	.47	.57	.51	.47	.44
6.0	.57	.49	.42	.56	.48	.42	.54	.47	.42	.53	.46	.41	.51	.45	.41	.39
7.0	.52	.43	.37	.51	.43	.37	.49	.42	.36	.48	.41	.36	.46	.40	.36	.34
8.0	.47	.39	.33	.46	.38	.33	.45	.38	.32	.44	.37	.32	.42	.36	.32	.30
9.0	.43	.35	.29	.42	.34	.29	.41	.34	.29	.40	.33	.29	.39	.33	.28	.27
10.0	.39	.32	.26	.39	.31	.26	.38	.31	.26	.37	.30	.26	.36	.30	.26	.24



C Range: 0 - 360DEG
 C Interval: 22.5DEG
 Test Speed: HIGH
 Temperature: 25.3DEG
 Operators: Oliver
 Test Date: 2019-10-11

γ Range: 0 - 180DEG
 γ Interval: 1.0DEG
 Test System: EVERFINE GO-R5000_V2 SYSTEM V2.0.366
 Humidity: 65.0%
 Test Distance: 2.499m [K=1.0000]
 Remarks:

WEC AND CCEC

pcc	80%			70%			50%			30%			10%			0	
pw	50%	30%	10%	50%	30%	10%	50%	30%	10%	50%	30%	10%	50%	30%	10%	0	
pfc	20%			20%			20%			20%			20%			0	
RCR	RCR:Room Cavity Ratio						Wall Exitance Coefficients(WEC)										
0.0																	
1.0	.276	.157	.050	.269	.153	.049	.255	.146	.047	.242	.140	.045	.230	.134	.043		
2.0	.269	.148	.045	.263	.145	.045	.251	.139	.043	.239	.134	.042	.229	.129	.041		
3.0	.255	.136	.041	.249	.134	.040	.238	.129	.039	.228	.125	.038	.219	.121	.038		
4.0	.239	.124	.037	.234	.123	.036	.225	.119	.036	.216	.116	.035	.207	.113	.034		
5.0	.224	.114	.033	.219	.113	.033	.211	.110	.032	.203	.107	.032	.195	.104	.031		
6.0	.209	.105	.030	.205	.104	.030	.198	.101	.029	.190	.099	.029	.184	.097	.029		
7.0	.196	.097	.027	.192	.096	.027	.186	.094	.027	.179	.092	.027	.173	.090	.026		
8.0	.184	.090	.025	.181	.089	.025	.174	.087	.025	.169	.085	.025	.163	.084	.024		
9.0	.173	.084	.023	.170	.083	.023	.164	.081	.023	.159	.080	.023	.154	.078	.023		
10.0	.163	.078	.022	.160	.077	.022	.155	.076	.021	.150	.075	.021	.146	.073	.021		

pcc	80%			70%			50%			30%			10%			0
pw	50%	30%	10%	50%	30%	10%	50%	30%	10%	50%	30%	10%	50%	30%	10%	0
pfc	20%			20%			20%			20%			20%			0
RCR	RCR:Room Cavity Ratio						Ceiling Cavity Exitance Coefficients(CCEC)									
0.0	.201	.201	.201	.171	.171	.171	.117	.117	.117	.067	.067	.067	.021	.021	.021	
1.0	.188	.167	.147	.161	.143	.127	.110	.098	.088	.063	.057	.051	.020	.018	.016	
2.0	.179	.142	.111	.154	.122	.096	.105	.085	.067	.061	.049	.039	.019	.016	.013	
3.0	.172	.124	.087	.147	.107	.075	.101	.075	.053	.058	.044	.031	.019	.014	.010	
4.0	.165	.111	.070	.141	.096	.061	.097	.067	.043	.056	.039	.025	.018	.013	.008	
5.0	.158	.101	.058	.136	.087	.051	.093	.061	.036	.054	.036	.021	.017	.012	.007	
6.0	.151	.092	.050	.130	.080	.044	.090	.056	.031	.052	.033	.018	.017	.011	.006	
7.0	.145	.086	.044	.125	.074	.038	.086	.052	.027	.050	.031	.016	.016	.010	.005	
8.0	.139	.080	.039	.119	.069	.034	.083	.049	.024	.048	.029	.015	.016	.009	.005	
9.0	.133	.075	.036	.114	.065	.031	.079	.046	.022	.046	.027	.013	.015	.009	.004	
10.0	.127	.071	.033	.110	.061	.029	.076	.043	.020	.044	.026	.012	.014	.008	.004	

C Range: 0 - 360DEG
 C Interval: 22.5DEG
 Test Speed: HIGH
 Temperature: 25.3DEG
 Operators: Oliver
 Test Date: 2019-10-11

γ Range: 0 - 180DEG
 γ Interval: 1.0DEG
 Test System: EVERFINE GO-R5000_V2 SYSTEM V2.0.366
 Humidity: 65.0%
 Test Distance: 2.499m [K=1.0000]
 Remarks:

UGR(Unified Glare Rating) Table

ceiling/cavity	0.7	0.7	0.5	0.5	0.3	0.7	0.7	0.5	0.5	0.3
walls	0.5	0.3	0.5	0.3	0.3	0.5	0.3	0.5	0.3	0.3
working plane	0.2	0.2	0.2	0.2	0.2	0.2	0.2	0.2	0.2	0.2
Room dimensions	Viewed crosswise					Viewed endwise				
x = 2H y = 2H	17.9	19.4	18.2	19.6	19.8	23.6	25.0	23.8	25.3	25.5
3H	18.2	19.6	18.5	19.8	20.1	23.5	24.9	23.8	25.1	25.4
4H	18.3	19.6	18.7	19.9	20.2	23.4	24.7	23.8	25.0	25.3
6H	18.4	19.6	18.7	19.9	20.2	23.4	24.6	23.7	24.8	25.1
8H	18.4	19.5	18.7	19.8	20.2	23.3	24.5	23.7	24.8	25.1
12H	18.4	19.5	18.7	19.8	20.1	23.3	24.4	23.6	24.7	25.0
4H 2H	19.5	20.8	19.9	21.1	21.4	23.6	24.9	24.0	25.2	25.5
3H	19.8	20.9	20.2	21.2	21.5	23.6	24.7	24.0	25.0	25.4
4H	19.9	20.9	20.3	21.3	21.6	23.6	24.6	24.0	24.9	25.3
6H	20.0	20.9	20.4	21.2	21.6	23.5	24.4	24.0	24.8	25.2
8H	20.0	20.8	20.4	21.2	21.6	23.5	24.3	23.9	24.7	25.1
12H	20.0	20.7	20.4	21.1	21.6	23.5	24.2	23.9	24.6	25.0
8H 4H	19.9	20.7	20.3	21.1	21.5	23.5	24.3	23.9	24.7	25.1
6H	20.0	20.7	20.5	21.1	21.6	23.5	24.1	23.9	24.6	25.0
8H	20.0	20.6	20.5	21.1	21.6	23.4	24.0	23.9	24.5	24.9
12H	20.1	20.6	20.6	21.0	21.5	23.4	23.9	23.9	24.4	24.9
12H 4H	19.9	20.6	20.3	21.0	21.4	23.5	24.2	23.9	24.6	25.0
6H	20.0	20.6	20.5	21.0	21.5	23.4	24.0	23.9	24.5	24.9
8H	20.0	20.5	20.5	21.0	21.5	23.4	23.9	23.9	24.4	24.9
Variations with the observer position at spacings:										
S = 1.0H	+ 0.5 / - 0.7					+ 1.0 / - 1.0				
1.5H	+ 0.8 / - 1.5					+ 2.0 / - 3.1				
2.0H	+ 2.8 / - 4.1					+ 1.4 / - 2.7				

CIE Pub.117, 63.96 lm Total Lamp Luminous Flux Correct ($8\log(F/F_0) = -9.6$)

C Range: 0 - 360DEG
 C Interval: 22.5DEG
 Test Speed: HIGH
 Temperature: 25.3DEG
 Operators: Oliver
 Test Date: 2019-10-11

γ Range: 0 - 180DEG
 γ Interval: 1.0DEG
 Test System: EVERFINE GO-R5000_V2 SYSTEM V2.0.366
 Humidity: 65.0%
 Test Distance: 2.499m [K=1.0000]
 Remarks:

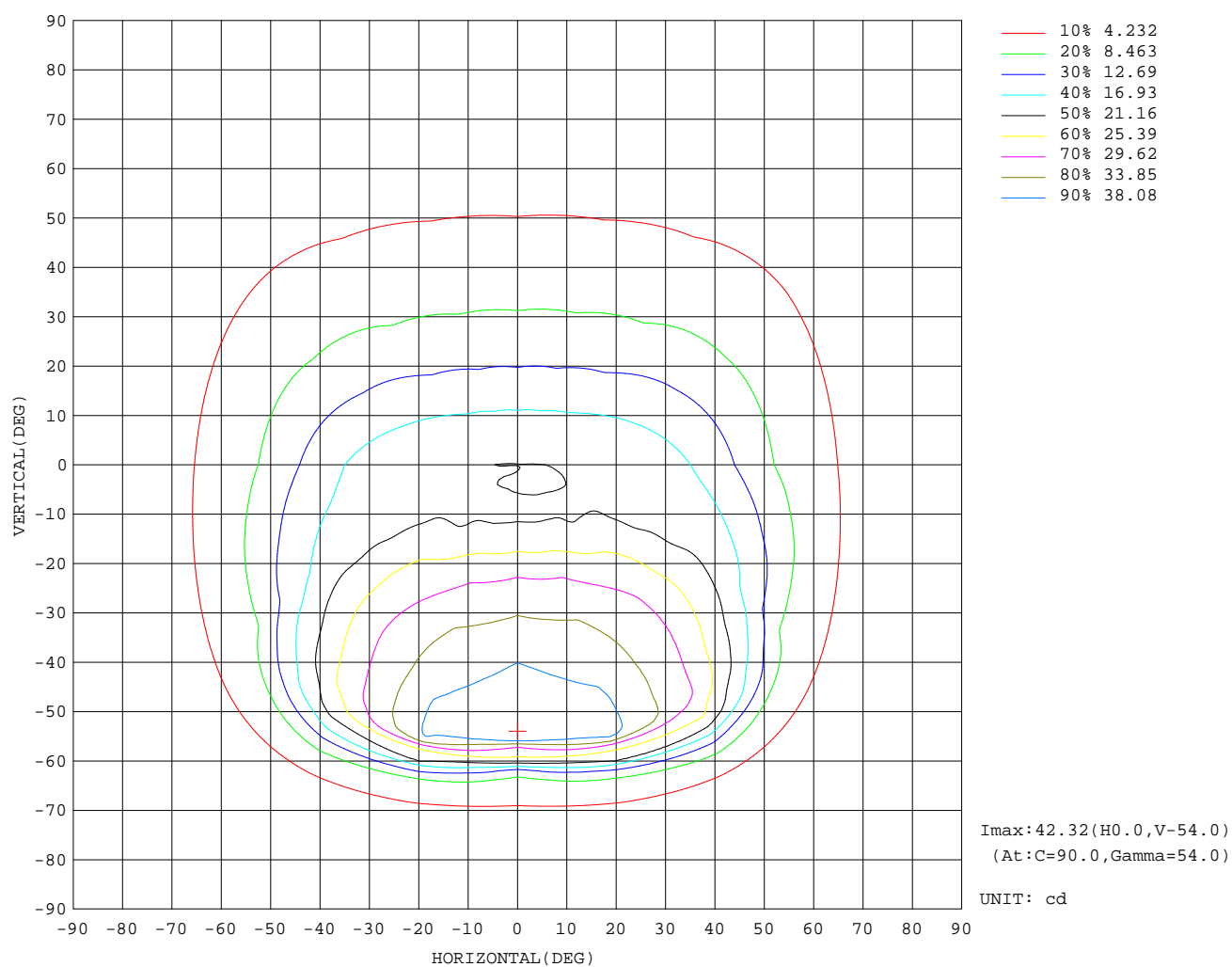
UTILIZATION FACTORS TABLE

REFLECTANCE										
Ceiling	0.8	0.8	0.8	0.7	0.7	0.7	0.5	0.5	0.5	0
Walls	0.7	0.5	0.3	0.7	0.5	0.3	0.7	0.5	0.3	0
Working plane	0.2	0.2	0.2	0.2	0.2	0.2	0.2	0.2	0.2	0
ROOM INDEX	UTILIZATION FACTORS(PERCENT) $k(RI) \times RCR = 5$									
k = 0.60	56	44	37	55	44	37	54	43	37	30
0.80	67	55	48	66	55	48	64	54	47	40
1.00	77	66	59	76	65	59	73	67	58	51
1.25	84	74	68	83	74	67	80	72	66	59
1.50	90	80	74	88	79	73	85	77	72	64
2.00	97	89	83	95	87	82	91	85	80	72
2.50	100	93	87	98	92	86	94	89	84	76
3.00	103	97	92	101	95	91	97	92	89	80
4.00	107	102	97	105	100	96	100	96	93	84
5.00	109	105	101	107	103	99	102	99	96	87
ROOM INDEX	UF(total)									Direct
According to DIN EN 13032-2 2004				Suspended				SHRNOM = 1.25		

C Range: 0 - 360DEG
 C Interval: 22.5DEG
 Test Speed: HIGH
 Temperature: 25.3DEG
 Operators: Oliver
 Test Date: 2019-10-11

γ Range: 0 - 180DEG
 γ Interval: 1.0DEG
 Test System: EVERFINE GO-R5000_V2 SYSTEM V2.0.366
 Humidity: 65.0%
 Test Distance: 2.499m [K=1.0000]
 Remarks:

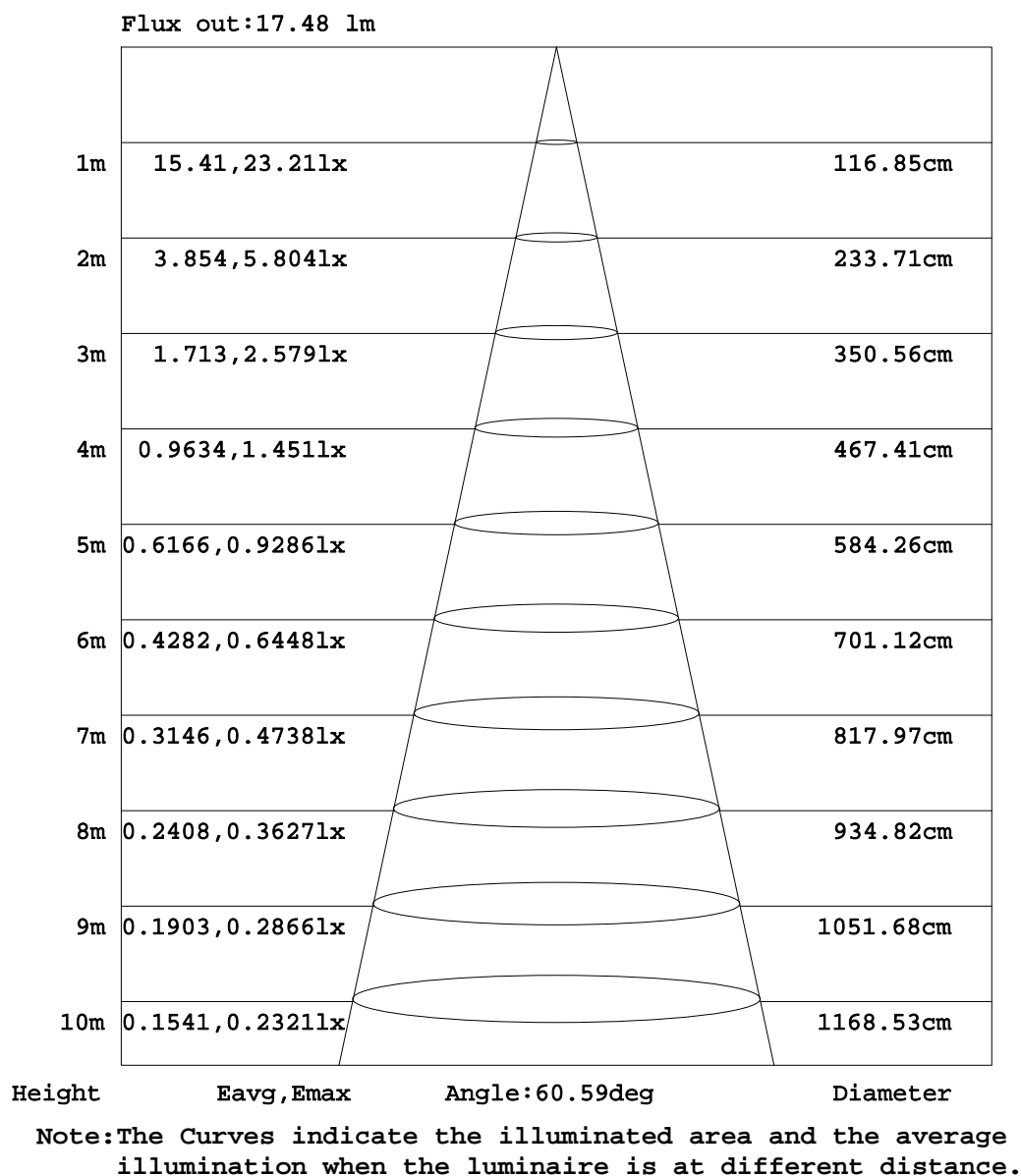
ISOCANDELA DIAGRAM



C Range: 0 - 360DEG
C Interval: 22.5DEG
Test Speed: HIGH
Temperature: 25.3DEG
Operators: Oliver
Test Date: 2019-10-11

γ Range: 0 - 180DEG
 γ Interval: 1.0DEG
Test System: EVERFINE GO-R5000_V2 SYSTEM V2.0.366
Humidity: 65.0%
Test Distance: 2.499m [K=1.0000]
Remarks:

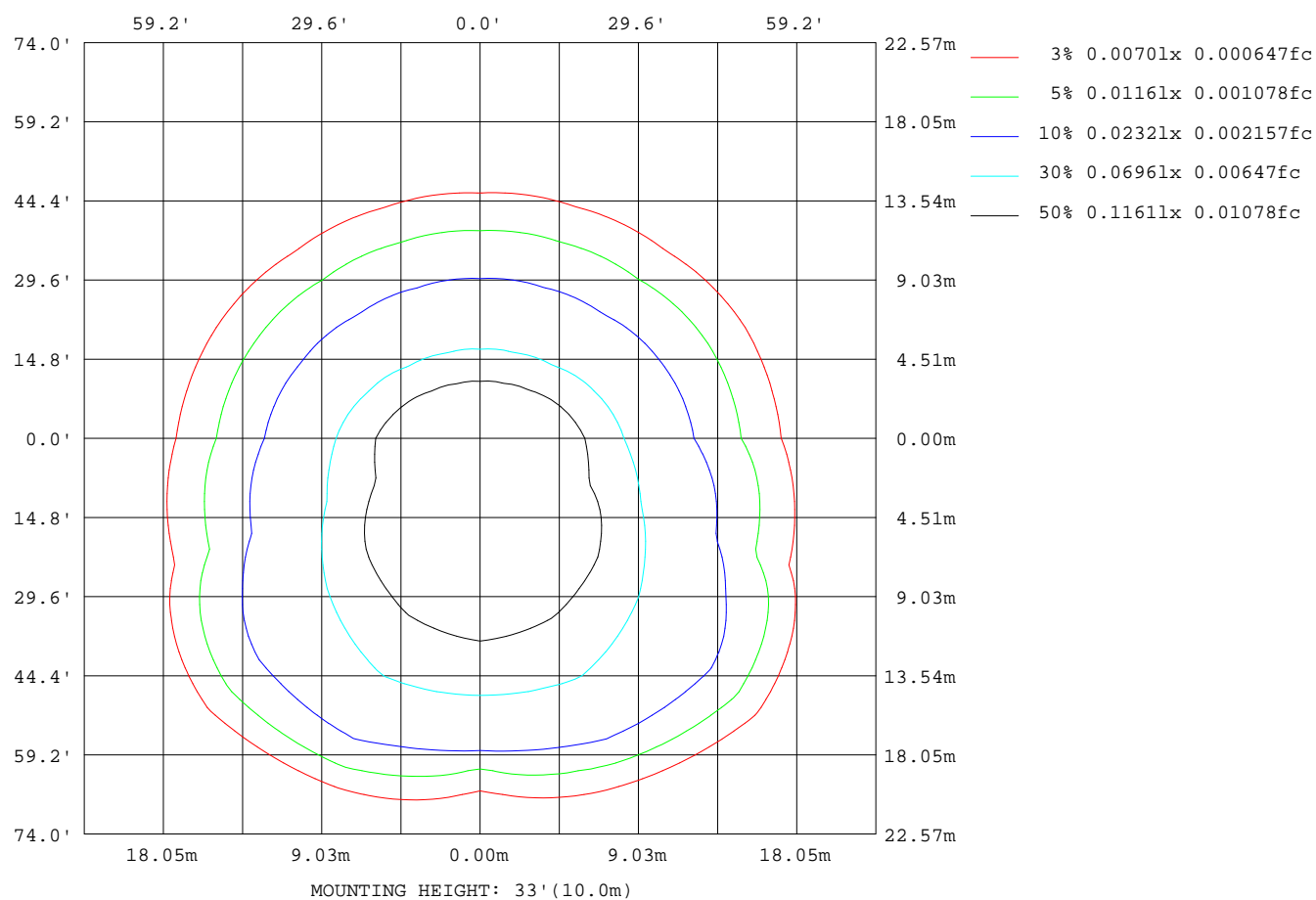
AAI Figure



C Range: 0 - 360DEG
 C Interval: 22.5DEG
 Test Speed: HIGH
 Temperature: 25.3DEG
 Operators: Oliver
 Test Date: 2019-10-11

γ Range: 0 - 180DEG
 γ Interval: 1.0DEG
 Test System: EVERFINE GO-R5000_V2 SYSTEM V2.0.366
 Humidity: 65.0%
 Test Distance: 2.499m [K=1.0000]
 Remarks:

ISOLUX DIAGRAM



C Range: 0 - 360DEG
C Interval: 22.5DEG
Test Speed: HIGH
Temperature: 25.3DEG
Operators: Oliver
Test Date: 2019-10-11

γ Range: 0 - 180DEG
 γ Interval: 1.0DEG
Test System: EVERFINE GO-R5000_V2 SYSTEM V2.0.366
Humidity: 65.0%
Test Distance: 2.499m [K=1.0000]
Remarks:

LED Avg.L Report

Test:U:120.00V I:0.0169A P:1.8335W PF:0.9025 Freq:59.99Hz Lamp Flux:63.9595x1 lm		
NAME: WL-LED102-30-WT	TYPE: Recessed-mounted Luminaire	HEIGHT:
SPEC.:	DIM.:	SERIAL No.:
MFR.: WAC Lighting	SUR.:	Shielding Angle:

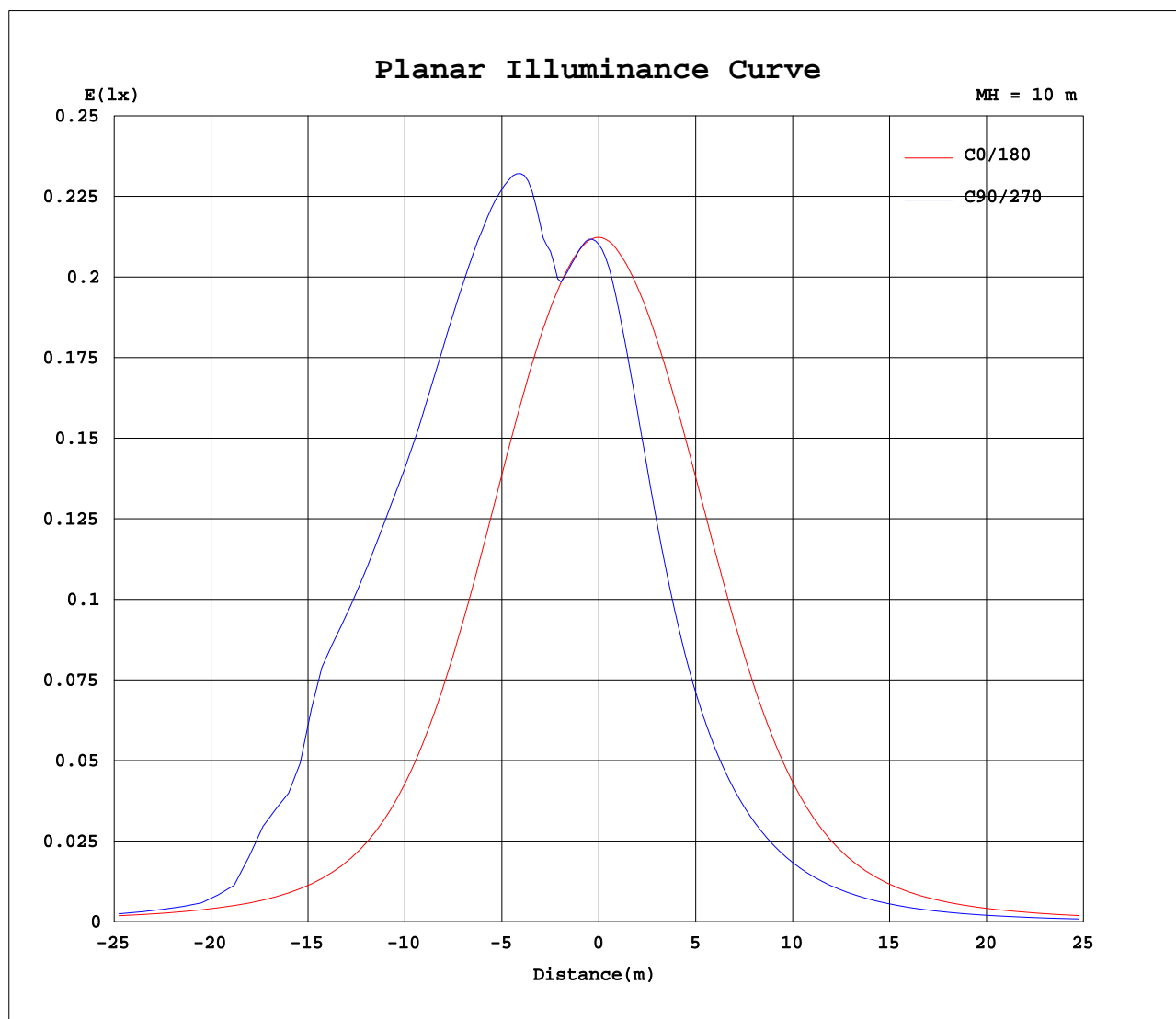
AvgL	cd/m2
L_0~180(65)av	100
L_0~180(75)av	84
L_0~180(85)av	48
L_90~270(65)av	100
L_90~270(75)av	59
L_90~270(85)av	15
L_45(65)av	164
L_45(75)av	68
L_45(85)av	23

Standard: GB/T 29293-2012

C Range: 0 - 360DEG
 C Interval: 22.5DEG
 Test Speed: HIGH
 Temperature: 25.3DEG
 Operators: Oliver
 Test Date: 2019-10-11

γ Range: 0 - 180DEG
 γ Interval: 1.0DEG
 Test System: EVERFINE GO-R5000_V2 SYSTEM V2.0.366
 Humidity: 65.0%
 Test Distance: 2.499m [K=1.0000]
 Remarks:

Planar Illuminance Curve



C Range: 0 - 360DEG
C Interval: 22.5DEG
Test Speed: HIGH
Temperature: 25.3DEG
Operators: Oliver
Test Date: 2019-10-11

γ Range: 0 - 180DEG
 γ Interval: 1.0DEG
Test System: EVERFINE GO-R5000_V2 SYSTEM V2.0.366
Humidity: 65.0%
Test Distance: 2.499m [K=1.0000]
Remarks:

LUMINOUS DISTRIBUTION INTENSITY DATA

Table--1

UNIT: cd

C(DEG) γ (DEG)	0	22.5	45	67.5	90	112.5	135	157.5	180	202.5	225	247.5	270	292.5	315	337.5			
0	21.1	21.1	21.1	21.1	21.1	21.1	21.1	21.1	21.1	21.1	21.1	21.1	21.1	21.1	21.1	21.1			
5	21.0	21.2	21.3	21.2	21.2	21.2	21.3	21.2	21.0	20.6	20.2	19.8	19.7	19.8	20.2	20.7			
10	20.8	21.1	21.0	21.0	21.0	21.0	21.0	21.1	20.8	19.8	18.5	17.7	17.4	17.8	18.7	19.9			
15	20.6	20.8	20.8	22.8	23.3	22.6	20.8	20.8	20.5	18.7	16.7	15.3	15.0	15.5	16.9	19.0			
20	20.2	20.4	22.8	26.5	27.8	26.1	22.4	20.4	20.1	17.4	14.6	13.0	12.6	13.2	14.9	17.9			
25	19.5	19.8	25.8	29.9	31.0	29.4	24.8	19.8	19.4	15.9	12.6	10.9	10.5	11.1	12.9	16.4			
30	18.4	20.2	28.1	32.4	33.7	31.8	27.1	19.4	18.3	14.2	10.8	9.21	8.84	9.32	11.0	14.8			
35	16.8	20.3	29.4	34.5	36.1	33.9	28.3	19.3	16.8	12.3	9.09	7.77	7.44	7.87	9.33	12.9			
40	14.6	20.6	30.3	36.2	38.1	35.7	28.9	18.9	14.6	10.4	7.66	6.54	6.25	6.62	7.85	10.9			
45	12.0	19.4	30.5	37.4	39.9	36.8	28.8	17.6	12.1	8.66	6.41	5.47	5.21	5.53	6.56	9.01			
50	9.34	16.8	30.0	39.0	41.7	38.3	28.0	15.0	9.58	7.11	5.31	4.51	4.29	4.57	5.41	7.35			
55	7.06	13.1	29.6	39.7	41.9	38.9	26.6	11.7	7.31	5.73	4.31	3.66	3.46	3.70	4.40	5.90			
60	5.35	8.30	25.5	25.1	23.7	24.5	21.6	7.93	5.52	4.51	3.42	2.89	2.72	2.93	3.49	4.62			
65	4.16	5.23	11.9	9.06	6.35	9.59	10.6	5.27	4.29	3.42	2.61	2.21	2.08	2.24	2.67	3.49			
70	3.18	3.82	4.23	4.19	3.79	4.23	4.23	3.90	3.26	2.48	1.91	1.62	1.51	1.64	1.95	2.53			
75	2.16	2.35	2.21	2.17	2.05	2.17	2.22	2.37	2.18	1.61	1.29	1.10	1.02	1.12	1.32	1.67			
80	1.21	1.15	1.01	0.92	0.89	0.92	0.99	1.12	1.21	0.89	0.72	0.65	0.60	0.67	0.75	0.95			
85	0.44	0.27	0.17	0.11	0.08	0.09	0.14	0.18	0.41	0.27	0.22	0.19	0.18	0.22	0.26	0.33			
90	0.13	0.00	0.00	0.00	0.00	0.00	0.00	0.00	0.10	0.00	0.00	0.00	0.00	0.00	0.00	0.00			
95	0.15	0.00	0.00	0.00	0.00	0.00	0.00	0.00	0.13	0.00	0.01	0.01	0.00	0.01	0.00	0.00			
100	0.16	0.00	0.00	0.00	0.00	0.00	0.00	0.00	0.15	0.04	0.02	0.02	0.01	0.02	0.02	0.03			
105	0.19	0.00	0.00	0.00	0.00	0.00	0.00	0.00	0.17	0.09	0.05	0.04	0.03	0.03	0.05	0.07			
110	0.22	0.01	0.00	0.00	0.01	0.01	0.01	0.00	0.19	0.14	0.10	0.08	0.07	0.08	0.09	0.10			
115	0.25	0.01	0.00	0.01	0.01	0.01	0.01	0.01	0.22	0.16	0.15	0.12	0.10	0.12	0.16	0.13			
120	0.28	0.02	0.00	0.02	0.02	0.02	0.02	0.01	0.24	0.19	0.27	0.16	0.12	0.15	0.26	0.16			
125	0.31	0.03	0.00	0.03	0.03	0.03	0.03	0.02	0.27	0.21	0.33	0.26	0.17	0.26	0.31	0.19			
130	0.35	0.03	0.00	0.04	0.04	0.04	0.04	0.02	0.29	0.25	0.35	0.40	0.32	0.37	0.34	0.22			
135	0.37	0.05	0.01	0.05	0.05	0.05	0.05	0.03	0.32	0.27	0.37	0.45	0.38	0.40	0.36	0.25			
140	0.38	0.07	0.02	0.04	0.06	0.06	0.06	0.04	0.35	0.31	0.38	0.46	0.42	0.41	0.34	0.28			
145	0.38	0.06	0.03	0.09	0.08	0.08	0.09	0.06	0.38	0.35	0.35	0.45	0.42	0.43	0.34	0.31			
150	0.34	0.14	0.04	0.11	0.10	0.11	0.13	0.12	0.40	0.40	0.37	0.40	0.45	0.39	0.35	0.32			
155	0.35	0.22	0.02	0.13	0.12	0.14	0.17	0.11	0.44	0.42	0.39	0.41	0.39	0.28	0.38	0.33			
160	0.42	0.24	0.05	0.17	0.14	0.17	0.23	0.01	0.44	0.45	0.48	0.44	0.44	0.15	0.42	0.39			
165	0.40	0.27	0.04	0.20	0.16	0.21	0.24	0.01	0.42	0.41	0.44	0.45	0.43	0.13	0.39	0.43			
170	0.31	0.28	0.01	0.17	0.18	0.19	0.19	0.01	0.34	0.34	0.36	0.38	0.40	0.10	0.24	0.35			
175	0.28	0.33	0.06	0.01	0.10	0.07	0.01	0.02	0.31	0.31	0.30	0.31	0.21	0.07	0.15	0.13			
180	0.01	0.01	0.01	0.01	0.01	0.01	0.01	0.01	0.01	0.01	0.01	0.01	0.01	0.01	0.01	0.01			

C Range: 0 - 360DEG
 C Interval: 22.5DEG
 Test Speed: HIGH
 Temperature: 25.3DEG
 Operators: Oliver
 Test Date: 2019-10-11

γ Range: 0 - 180DEG
 γ Interval: 1.0DEG
 Test System: EVERFINE GO-R5000_V2 SYSTEM V2.0.366
 Humidity: 65.0%
 Test Distance: 2.499m [K=1.0000]
 Remarks: