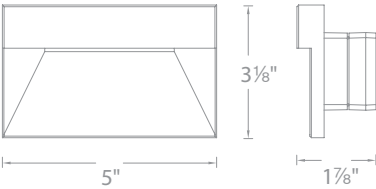
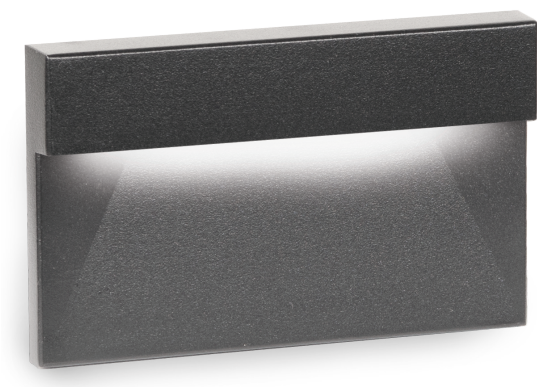


RECTANGLE STEP LIGHTS 12V

4091

WAC

LANDSCAPE LIGHTING



Fixture Type:

Catalog Number:

Project:

Location:

PRODUCT DESCRIPTION

Horizontal rectangle step light designed for safety and style on stairways, patios, decks, balcony areas, walkways and building perimeters.

Features an architectural design. Energy efficient for long-lasting outdoor lighting solutions. Creates an attractive, romantic impression at night.

FEATURES

- Corrosion resistant aluminum alloy
- Geometric design with downward illumination
- Fits into 2" x 4" Junction Box with minimum inside dimensions of 3"L x 2"W x 2.5"D
- Magnetized design for easy installation and maintenance
- Protected against high-pressure water jets
- 100 - 10% MLV dimming
- Landscape transformer required (sold separately)

SPECIFICATIONS

Input: 9-15VAC (Transformer is required)

Power: 2W / 3.1VA (Use VA value for sizing the transformer and calculate voltage drop.)

Brightness Up to 3lm

CRI: 90+

Standard: IP66, UL & cUL

Rated Life: 60,000 hours

ORDERING NUMBER

		Color Temp	CRI	Finish	Lumens
4091	12V	27	2700K	90	BK Black on Aluminum 3
					BZ Bronze on Aluminum 3
					WT White on Aluminum 3
		30	3000K	90	BK Black on Aluminum 3
					BZ Bronze on Aluminum 3
					WT White on Aluminum 3
		AM	Amber	-	BK Black on Aluminum 610nm
					BZ Bronze on Aluminum 610nm
					WT White on Aluminum 610nm

4091-_____

Example: 4091-30BK

RECTANGLE STEP LIGHTS 12V
4091

WAC
LANDSCAPE LIGHTING

Magnetic Transformers

Stainless Steel, 12-15V output, IP65 rated, UL 1838 listed
See transformer spec sheet for details and its accessories

9075-TRN-SS
75W Max

9150-TRN-SS
150W Max

9300-TRN-SS
300W Max

9600-TRN-SS
600W Max

