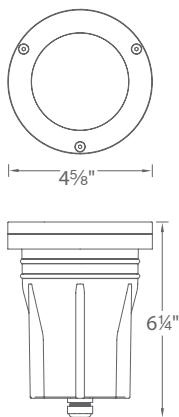


3" INGROUND 12V  
5031

WAC  
LANDSCAPE LIGHTING



Fixture Type:

Catalog Number:

Project:

Location:

PRODUCT DESCRIPTION

Landscape Wall Wash luminaire

FEATURES

- Tiltable and adjustable beam angle
- Integral dimmer
- IP67 rated, protected from temporary immersion under water
- Drive over up to 4500lbs
- Solid diecast brass or corrosion resistant aluminum
- Available concrete pour kit
- 6' lead wire and direct burial gel filled wire nuts included
- Maintains constant lumen output against voltage drop
- UL 1838 Listed
- MLV dimmable with remote MLV dimmers

SPECIFICATIONS

**Input:** 9 - 15VAC (Transformer is required)  
**Power:** 2W to 12W / 2VA - 17VA (Use VA value for sizing the transformer and calculate voltage drop.)  
**Brightness:** 70 lm to 505 lm  
**Beam Angle:** 15° to 60°  
**CRI:** 85  
**Rated Life:** 55,000 hours

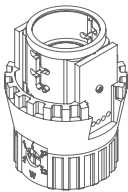
IEC safety Standard	Walk over	Drive over
Resistance to static load test	Yes (1125lbs)	Yes (4496lbs)
Resistance to torque and shear loads test	N/A	Yes

ORDERING NUMBER

		ColorTemp		Finish	
5031	3" Inground 12V	27	2700K	BZ	Bronze on Aluminum
		30	3000K	BBR	Bronze on Brass

Module Replacement

2700K	M5031LE-27BZ
3000K	M5031LE-30BZ



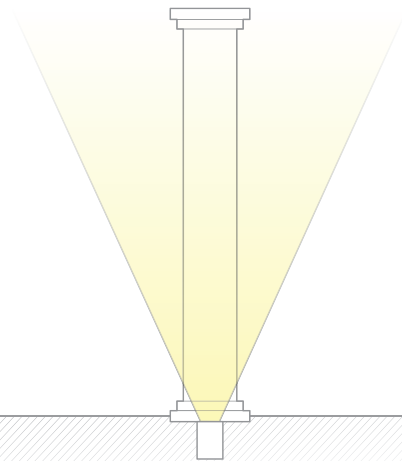
5031-\_\_\_\_\_

Example: 5031-30BBR

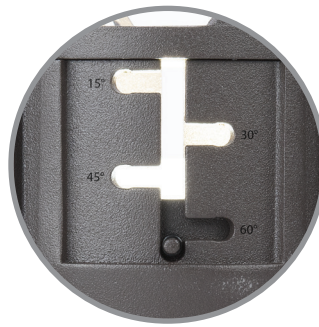
# 3" INGROUND 12V

5031

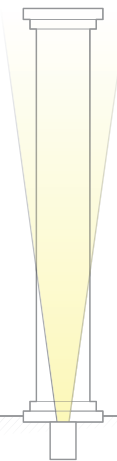
## WAC LANDSCAPE LIGHTING



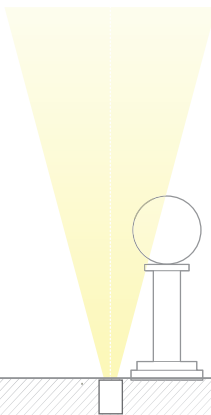
**Typical Inground**  
*Most light output goes into the air,  
causing light pollution*



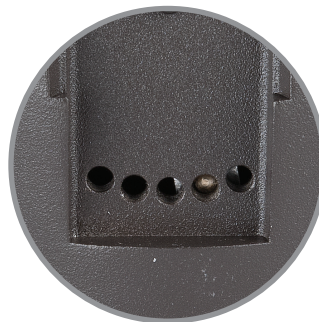
**Adjust Beam Angles**  
*Presets at  
15°, 30°, 45°, 60°*



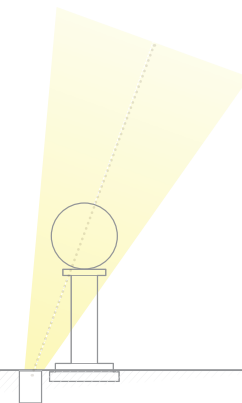
**Adjustable WAC Inground**  
*Adjust the light to where you need it*



**Typical Inground**  
*Most light output goes into the air,  
causing light pollution*



**Tilt and Aim**  
*Up to 40° of adjustability preset at  
-20°, -10°, 0°, 10°, 20°*



**Adjustable WAC Inground**  
*Adjust the light to where you need it*



**Control Brightness**  
*Adjustable from 70lm to 505lm  
Presets Comparable to  
10W, 25W, 35W, 50W, 75W Halogen source*



wacighting.com  
Phone (800) 526.2588  
Fax (800) 526.2585

**Headquarters, East Manufacturing Facility**  
44 Harbor Park Drive  
Port Washington, NY 11050

**South East Manufacturing Facility**  
1600 Distribution Ct  
Lithia Springs, GA 30122

**Central Manufacturing Facility**  
1700 South J Elmer Freeway, Ste 100  
Cedar Hill, TX 75104

**West Manufacturing Facility**  
1750 S Archibald Ave  
Ontario, CA 91761

3" INGROUND 12V  
5031

WAC  
LANDSCAPE LIGHTING

Rock Guard

*Protects the fixture face*



**5030-GRD-BZ**

*Bronze on Aluminum*

**5030-GRD-BBR**

*Bronze on Brass*

Non-Slip Lens



**5030-NSLEN-CL**

*Tempered Glass*

Optics

*Enhances saturation of florals and foliage*



**LENS-25-AMB**

*Amber*

**LENS-25-RED**

*Red*

**LENS-25-FR**

*Frosted*

**LENS-25-GRN**

*Green*

**LENS-25-BLU**

*Blue*

**LENS-25-HCL**

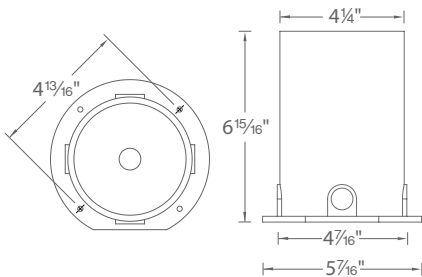
*Honeycomb Louver  
Reduces glare*

Concrete Pour Kit

*For installation in concrete  
Five 1/2" NPT threaded holes, PC*

**5030-PIP-PVC**

*Shown with temporary dense foam cap*



Magnetic Transformers

*Stainless Steel, 12-15V output, IP65 rated, UL 1838 listed  
See transformer spec sheet for details and its accessories*

**9075-TRN-SS**

*75W Max*

**9150-TRN-SS**

*150W Max*

**9300-TRN-SS**

*300W Max*

**9600-TRN-SS**

*600W Max*



wacighting.com  
Phone (800) 526.2588  
Fax (800) 526.2585

Headquarters, East Manufacturing Facility  
44 Harbor Park Drive  
Port Washington, NY 11050

South East Manufacturing Facility  
1600 Distribution Ct  
Lithia Springs, GA 30122

Central Manufacturing Facility  
1700 South J Elmer Freeway, Ste 100  
Cedar Hill, TX 75104

West Manufacturing Facility  
1750 S Archibald Ave  
Ontario, CA 91761